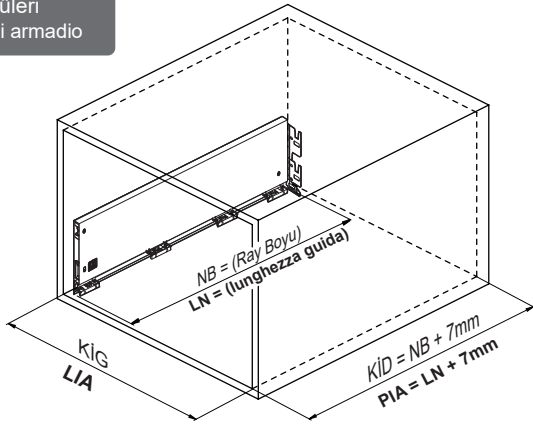


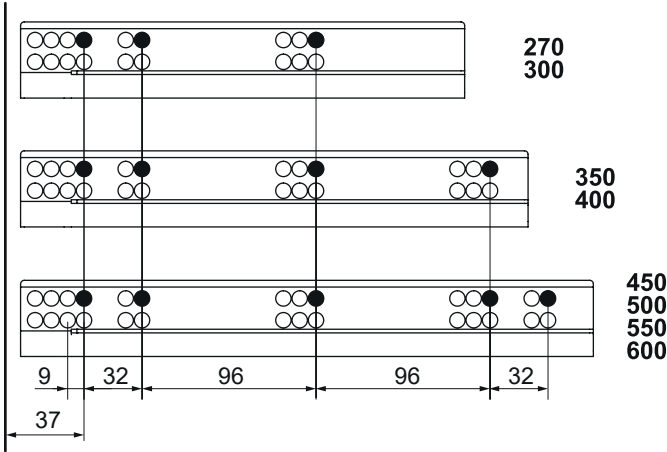


Kabin Ölçüleri Dimensioni armadio



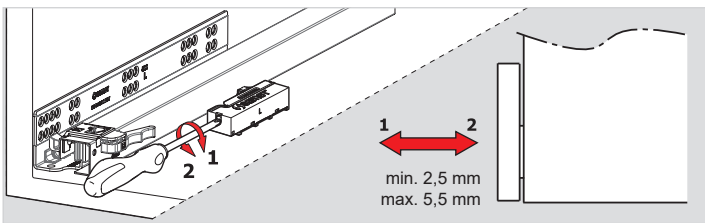
Rayların Vida Konum Ölçüleri Posizione della vite per le guide

Rayı işaretlenmiş deliklerden vidalayınız.
Avvitare la guida a partire dai fori contrassegnati.

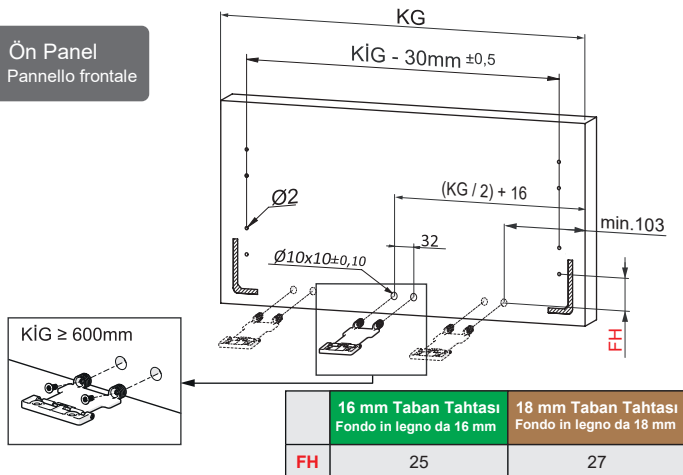


Bas - Aç Ray Ayarı

Regolazione guida con funzione di apertura a pressione



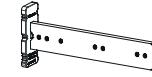
Ön Panel Pannello frontale



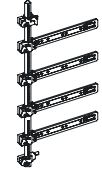
KİG : Kabin İç Genişliği
KİD : Kabin İç Derinliği
NB : Nominal Boy
KG : Ön Panel Genişliği
B : Klapa Yan Binisi
X : Klapa Alt Binisi

LIA : Larghezza Interna Armadio
PIA : Profondità Interna Armadio
LN : Lunghezza Nominale
KG : Larghezza pannello frontale
B : Rivestimento laterale pannello frontale
X : Rivestimento inferiore pannello frontale

Tavsiye Edilen Vida ve Şablonlar Viti e modelli raccomandati



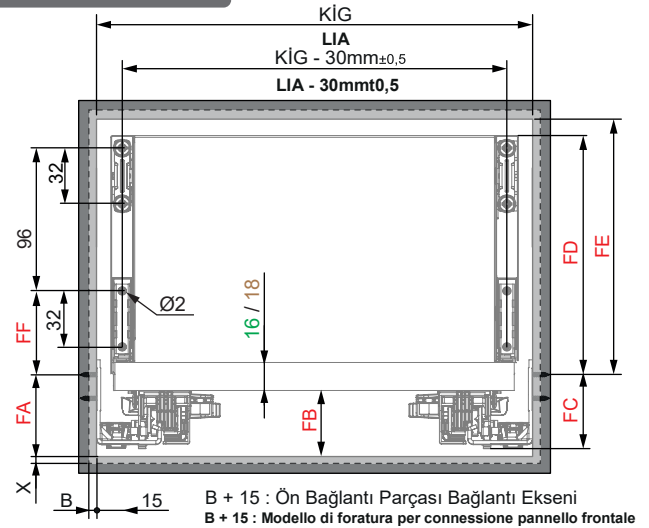
Smart EI Tipi Ray
Montaj Şablonu
Dima di foratura Smart



Smart Cetvelli Ray
Montaj Şablonu
Dima di foratura Smart con righe

Gövdede Yer İhtiyacı

Dimensioni di montaggio della guida



16 mm Taban Tahtası Uygulaması Applicazione su fondo in legno da 16 mm

	SC		PO - YBA	
	H.192	H.256	H.192	H.256
FA	41	43	43	43
FB	34	36	36	36
FC	39	42	42	42
FD	153	185	153	185
FE	157	189	157	189
FF	50	50	50	50

18 mm Taban Tahtası Uygulaması Applicazione su fondo in legno da 18 mm

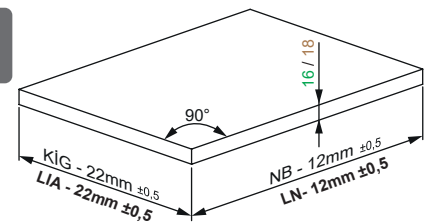
	SC		PO - YBA	
	H.192	H.256	H.192	H.256
FA	41	43	43	43
FB	34	36	36	36
FC	39	42	42	42
FD	155	187	155	187
FE	159	191	159	191
FF	52	52	52	52

SC : Guida con chiusura ammortizzata / Yavaşlatıcılı Ray

PO : Guida con funzione di apertura a pressione / Bas-Aç Ray

YBA : Guida con funzione di apertura a pressione e chiusura ammortizzata / Yavaşlatıcılı Bas-Aç Ray

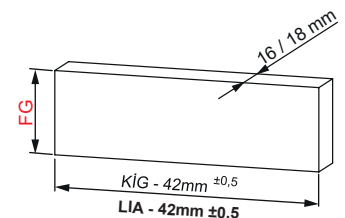
Ahşap Çekmece Tabanı Fondo del cassetto in legno



Ahşap Arkalık Pannello posteriore in legno

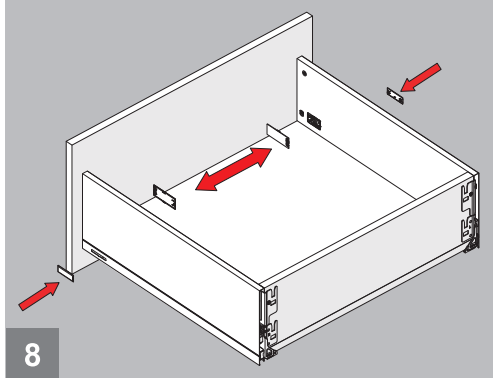
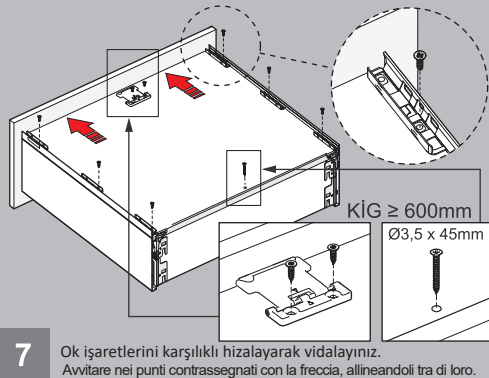
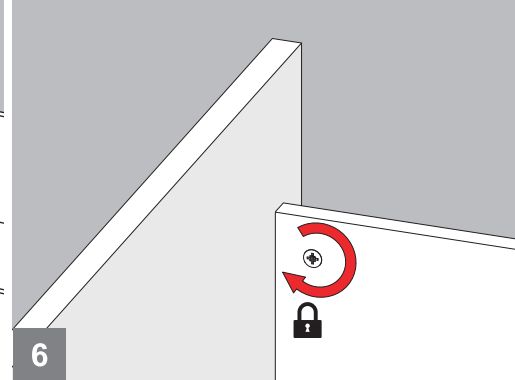
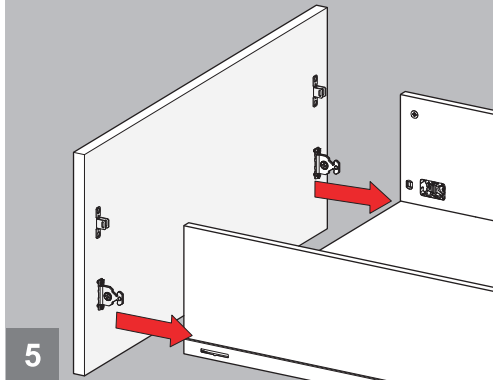
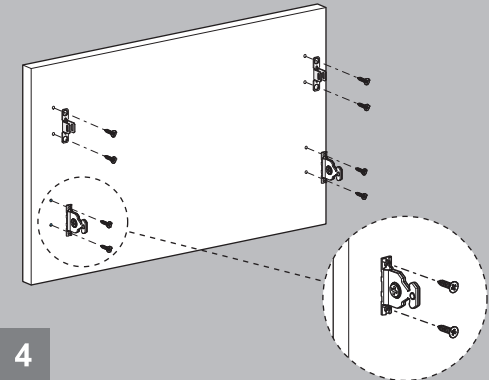
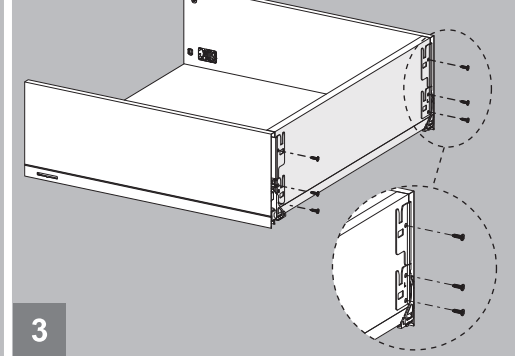
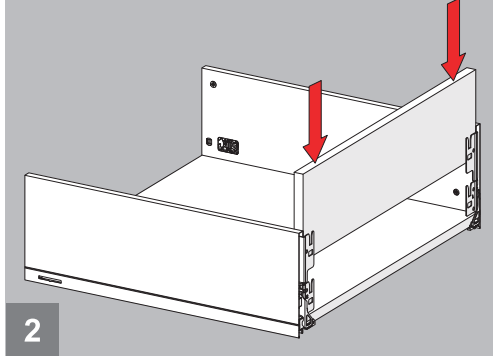
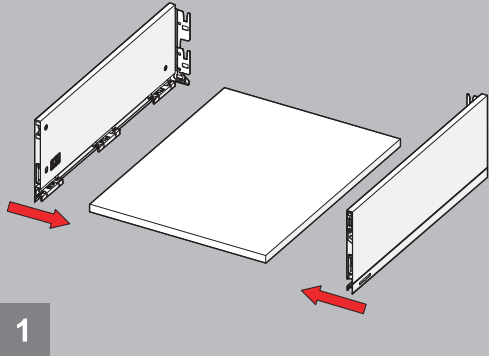
Pannello posteriore in legno

	H.192	H.256
FG	144	208

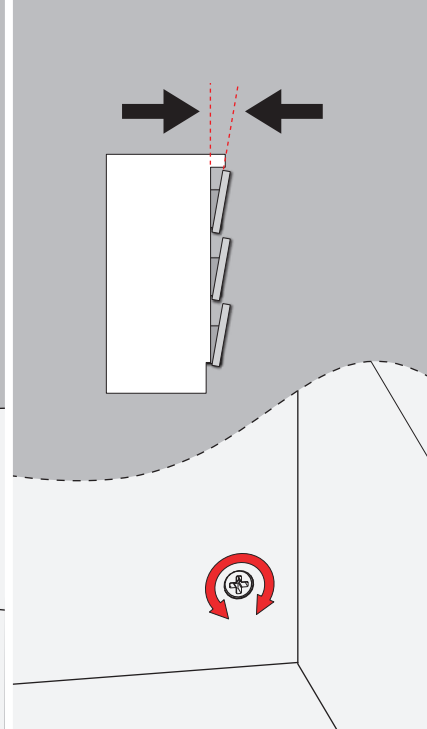
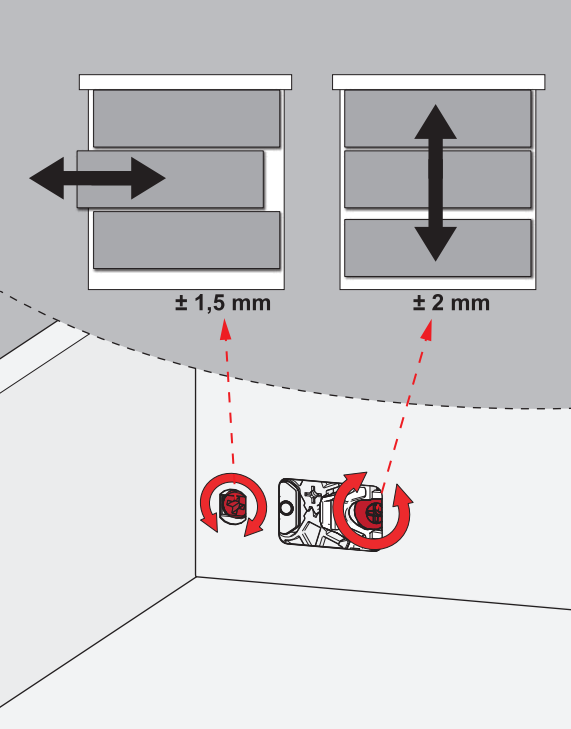




Montaj / Assemblaggio



Ayar / Regolazione



Önemli / Importante

