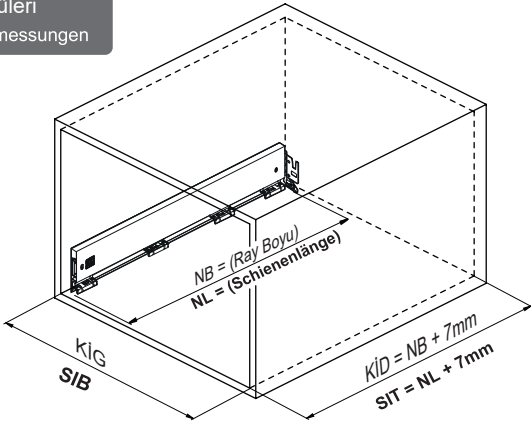




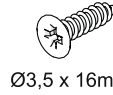
Kabin Ölçüleri Schrankabmessungen



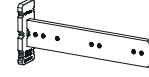
KİG : Kabin İç Genişliđi
KİD : Kabin İç Derinliđi
NB : Nominal Boy
KG : Ön Panel Genişliđi
B : Klapa Yan Binisi
X : Klapa Alt Binisi

SIB : Schrank-Innenbreite
SIT : Schrank-Innentiefe
NL : Nennlänge
KG : Breite der Frontblende
B : Seitliche Überlagerung Frontblende
X : Überlagerung Unterseite Frontblende

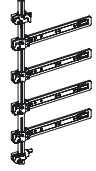
Tavsiye Edilen Vida ve Şablonlar Empfohlene Schrauben und Schablonen



Ø3,5 x 16mm



Smart EI Tipi Ray
Montaj Şablonu



Smart Cetveli Ray
Montaj Şablonu

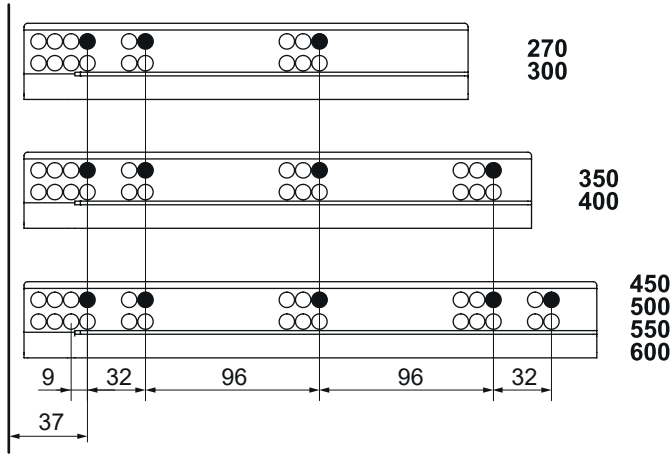
Smart-Bohrschablone

Smart-Bohrschablone mit Lineal

Rayların Vida Konum Ölçüleri

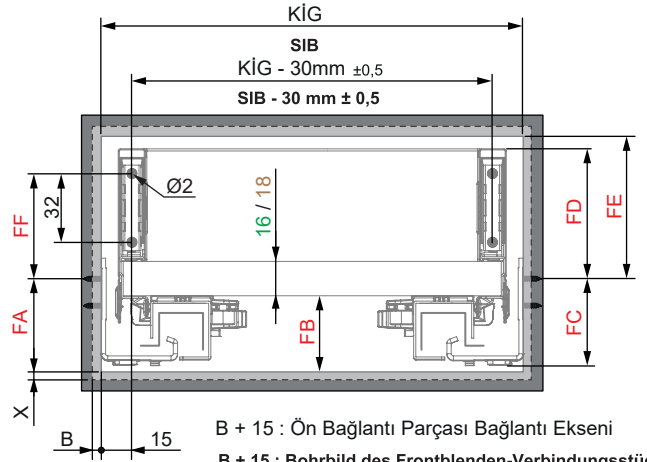
Schraubenposition der Schienenführungen

Rayı işaretlenmiş deliklerden vidalayınız.
Schrauben Sie die Schiene an den markierten
Löchern fest.



Gövdede Yer İhtiyacı

Montagmaße der Führungsschiene

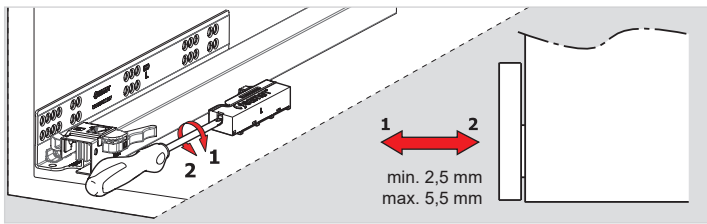


B + 15 : Ön Bağlantı Parçası Bağlantı Eksenini

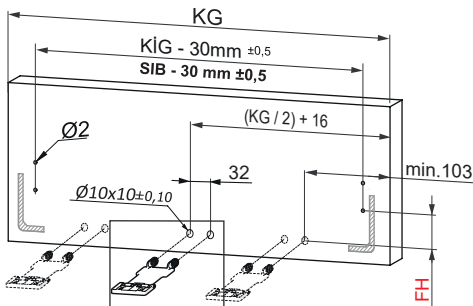
B + 15 : Bohrbild des Frontblenden-Verbindungsstücks

Bas - Aç Ray Ayarı

Anpassung von Push-Open-Führungen



Ön Panel Frontblende

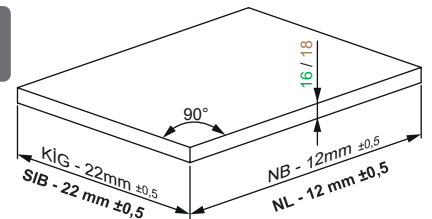


KİG ≥ 600mm

	16 mm Taban Tahtası 16 mm Holzboden	18 mm Taban Tahtası 18 mm Holzboden
FH	25	27

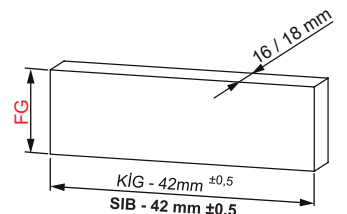
Ahşap Çekmece Tabanı

Schubladenboden aus Holz



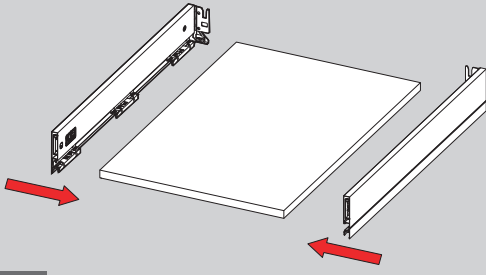
Ahşap Arkalık Holzrückwand

	H.106	H.138
FG	58	90

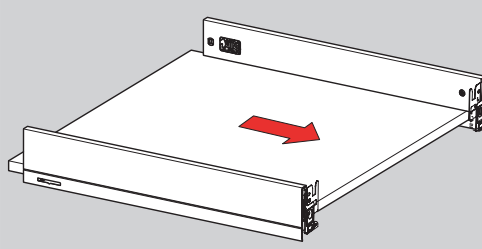




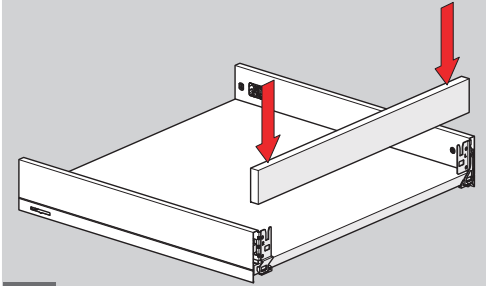
Montaj / Montage



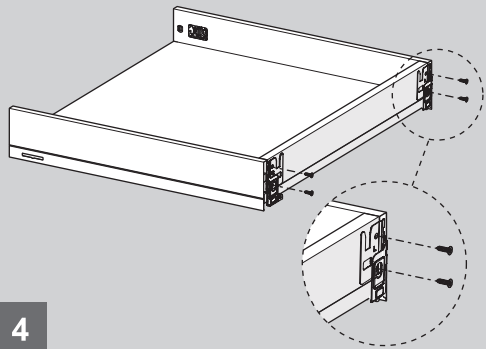
1



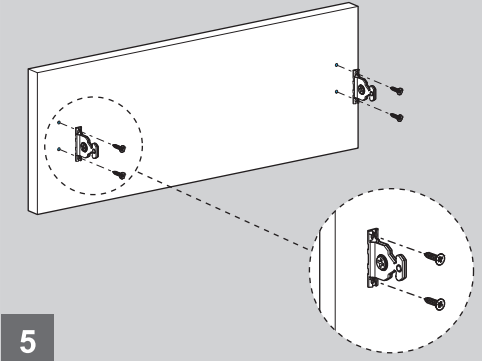
2



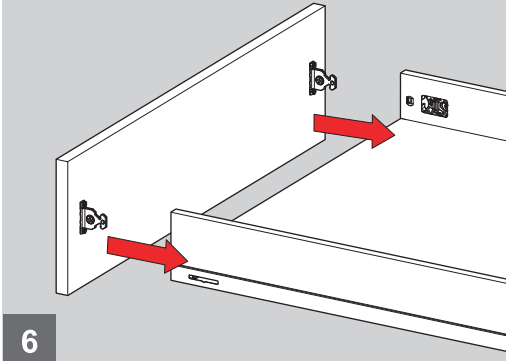
3



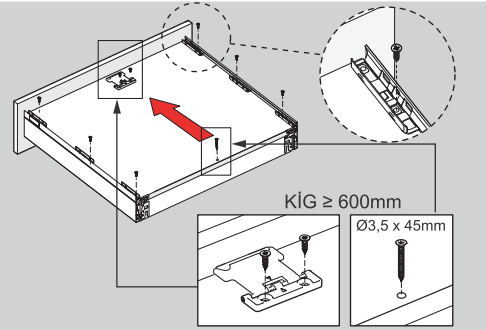
4



5



6

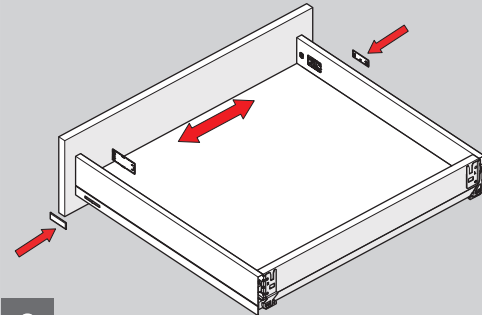


7

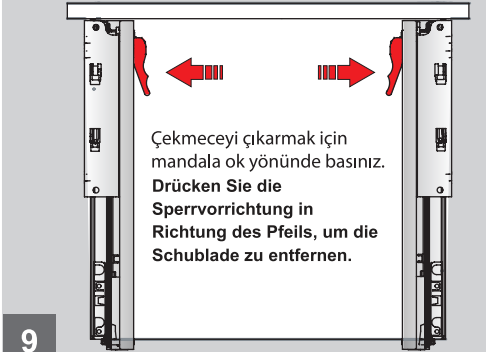
Ok işaretlerini karşılıklı hizalayarak vidalayınız.
In Richtung Pfeilmarkierungen einschrauben, und diese aneinander ausrichten.

KIG ≥ 600mm

Ø3,5 x 45mm



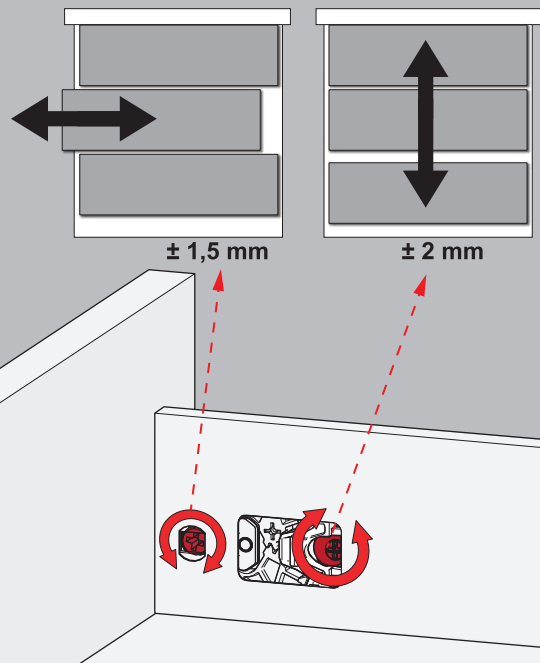
8



9

Çekmeceyi çıkarmak için
mandala ok yönünde basınız.
Drücken Sie die
Sperrvorrichtung in
Richtung des Pfeils, um die
Schublade zu entfernen.

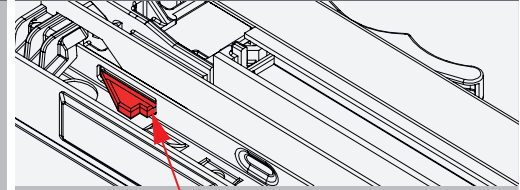
Ayar / Justierung



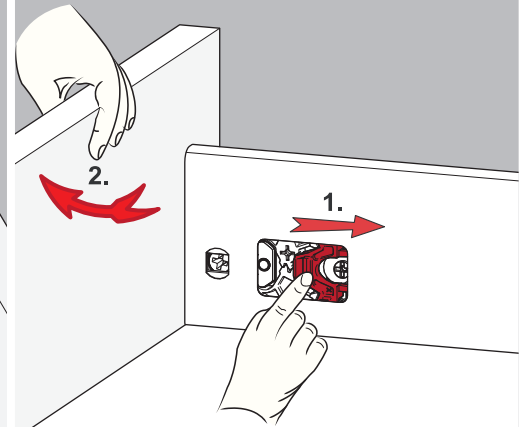
± 1,5 mm

± 2 mm

Önemli / Wichtig



Kilit tırnağının 2'nci kademesine geldiğinden emin olunuz.
Achten Sie darauf, dass sich die Verriegelungslasche in der 2.
Position befindet.



2.

1.