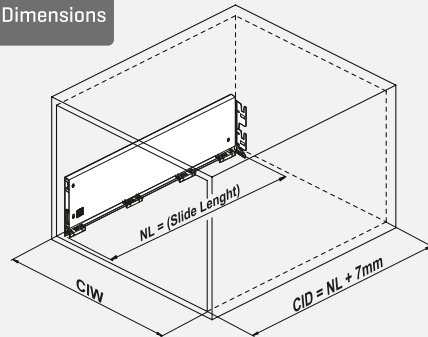


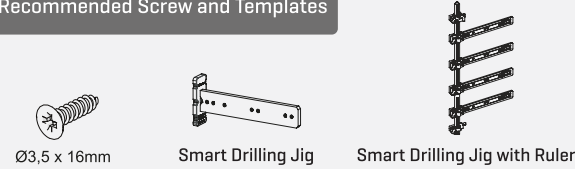


Cabinet Dimensions

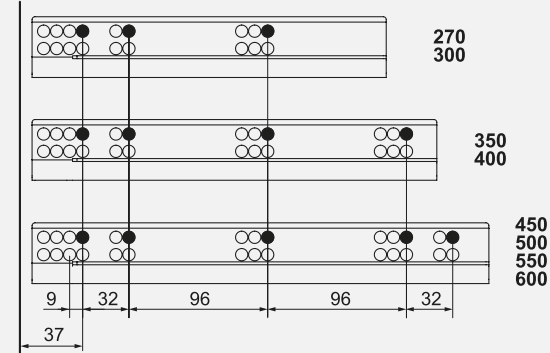


CIW : Cabinet Internal Width
CID : Cabinet Internal Depth
NL : Nominal Length
KG : Front Panel Width
B : Front Panel Side Overlay
X : Front Panel Bottom Overlay

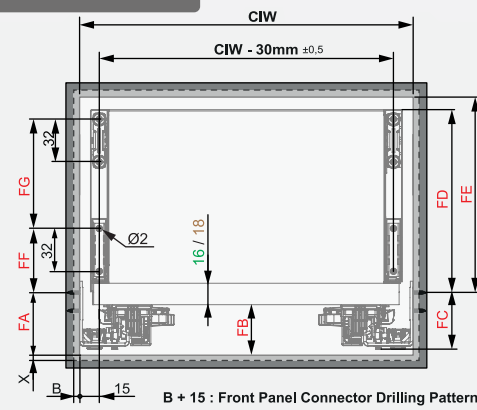
Recommended Screw and Templates



Screw Location for The Slides *Screw the slide from marked holes.



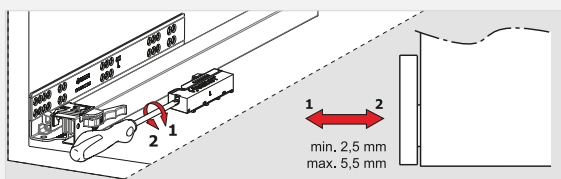
Slide Mounting Dimensions



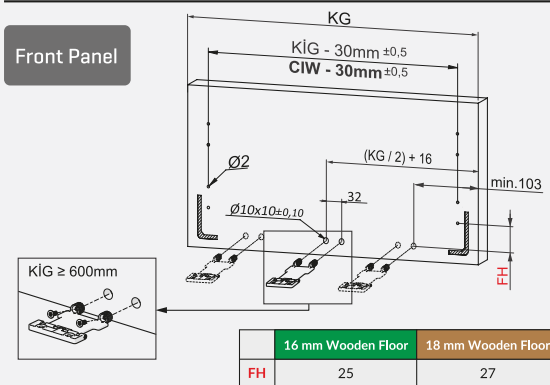
	16 mm Wooden Floor Application				18 mm Wooden Floor Application			
	SC		PO - YBA		SC		PO - YBA	
	H.192	H.256	H.192	H.256	H.192	H.256	H.192	H.256
FA	41	43	41	43	41	43	41	43
FB	34	36	34	36	34	36	34	36
FC	39	42	39	42	39	42	39	42
FD	153	185	153	185	155	187	155	187
FE	157	189	157	189	159	191	159	191
FF	50	50	50	50	52	52	52	52
FG	96	160	96	160	96	160	96	160

SC : Soft Close Slide
 PO : Push-Open Slide
 YBA : Push-Open Soft Close Slide

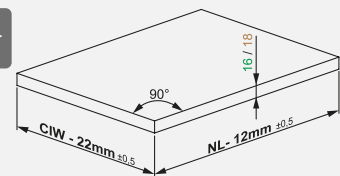
Push-Open Slide Adjustment



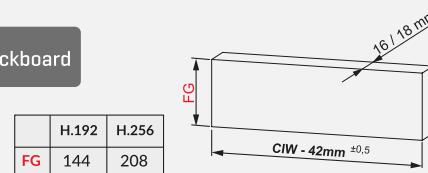
Front Panel



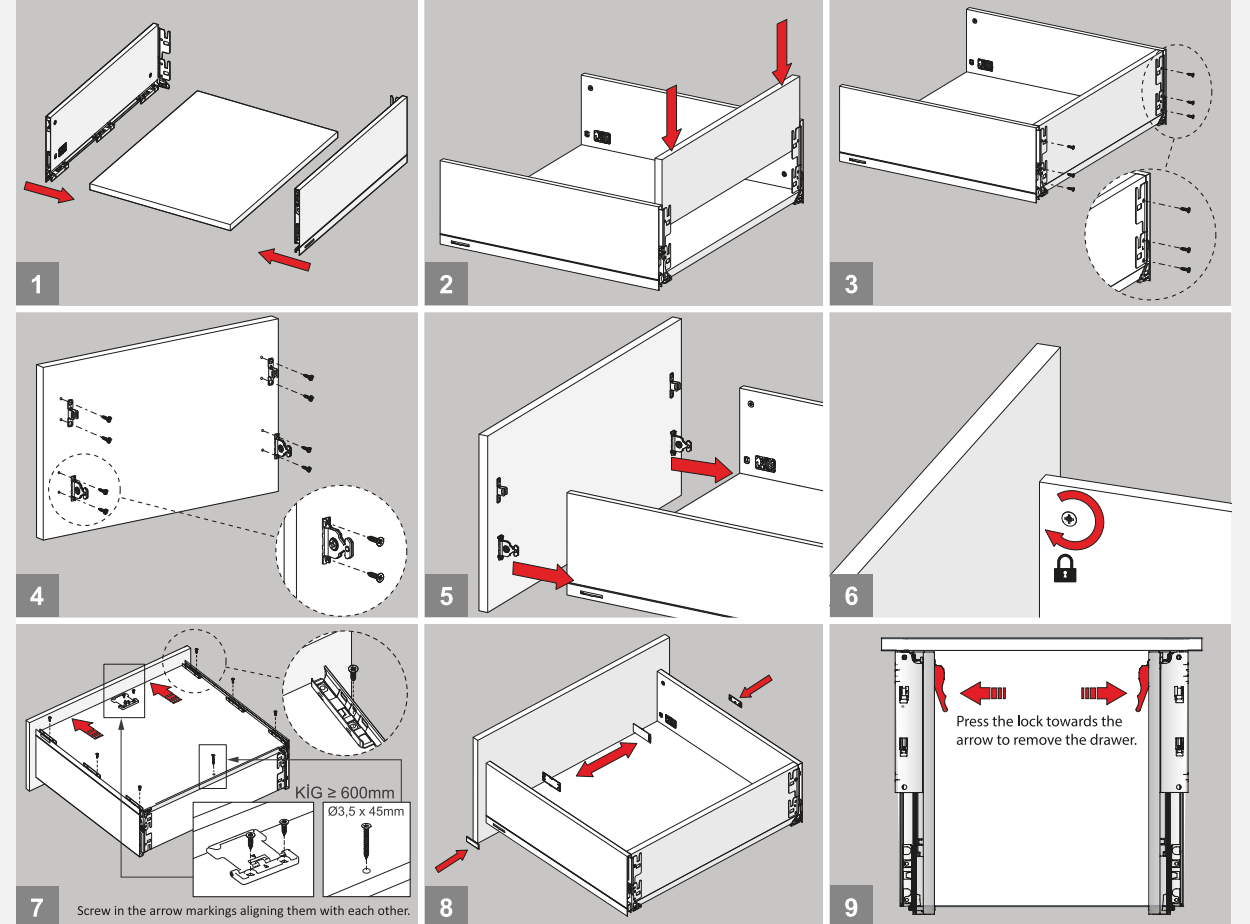
Wooden Drawer Floor



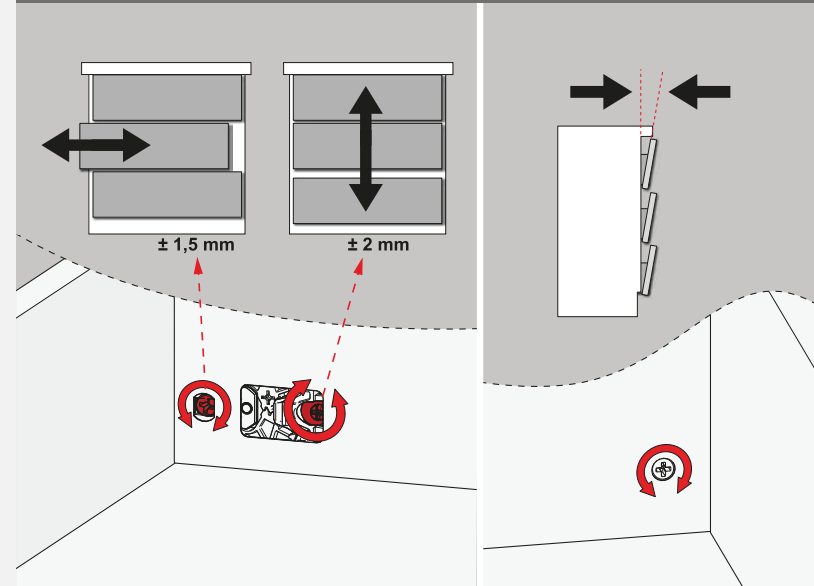
Wooden Backboard



Assembly



Adjustment



Important

