

FLOWBOX

Touch the High-End Design and Functionality



samet

Perfect combination of minimalist design, premium appearance and robust structure...

SOFT-CLOSE

FlowBox Drawer System's state-of-the-art technology and Soft-Close mechanism, allow end user to utilize the drawer easily & softly.

PUSH-OPEN

FlowBox Push-Open system provides a very smooth opening function to drawers and adds a touch of innovation...

PUSH-OPEN SOFT-CLOSE

FlowBox, thanks to the minimal pull-out force feature, requires just a small touch to open a drawer smoothly. The impeccable Soft-Close system of **FlowBox** ensures that the drawers close perfectly. SAMET New Generation Drawer Systems FlowBox combines the two most superior functions such as Push-Open and Soft-Close for perfect motion.





PERFECT

SYNCHRONIZATION

FOR SILENT

MOVEMENT

FlowBox's balanced movement features and state-of-the-art technology with its special synchronization system enable the slide to run over with perfect silence.

CHOOSE YOUR OWN
COLOUR

EXCLUSIVE COLOURS

FlowBox completes the new generation of furniture with its trendy colours to create a perfect total look.



SPECIAL COLOURS

The generous range of side colour options maximises the exclusivity of **FlowBox**.





4 DIFFERENT SIDE HEIGHTS

FlowBox allow the creation of comfort and functionality.



H: 106 Side Panel
[Inner Height: 58]



H: 192 Side Panel
[Inner Height: 144]



H: 138 Side Panel
[Inner Height: 90]

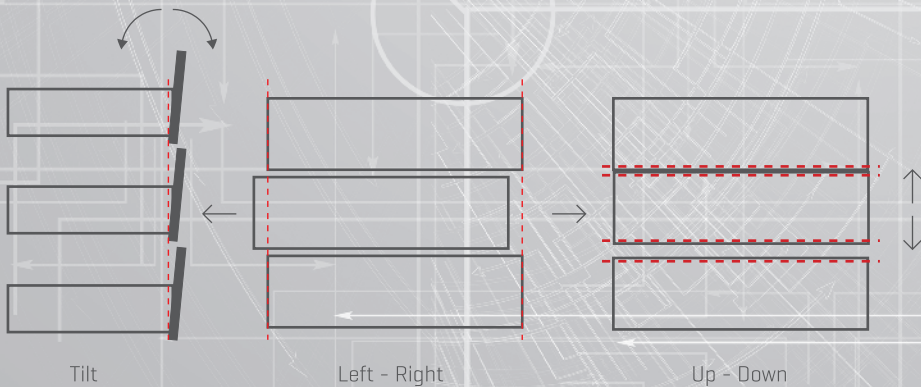


H: 256 Side Panel
[Inner Height: 208]



3D ADJUSTMENT

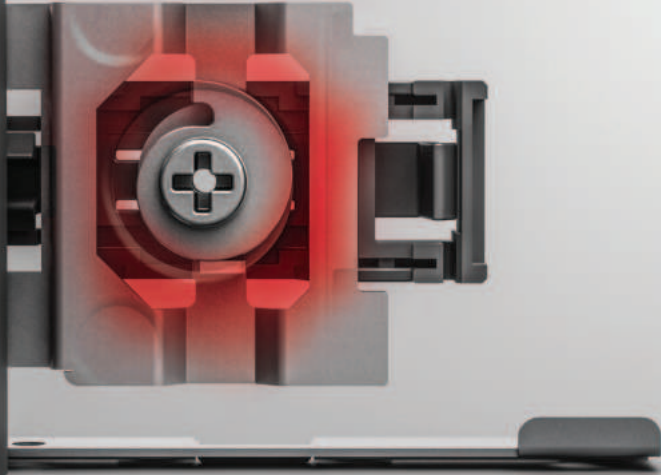
FlowBox's three-dimensional-adjustment mechanism with its high tolerance level was designed with consideration to both-users' and manufacturers' convenience.



TILT

The distinguished tilt adjustment mechanism of **FlowBox** ensures that the drawers are perfectly and easily adjusted on the front panel.

→ Tilt ←

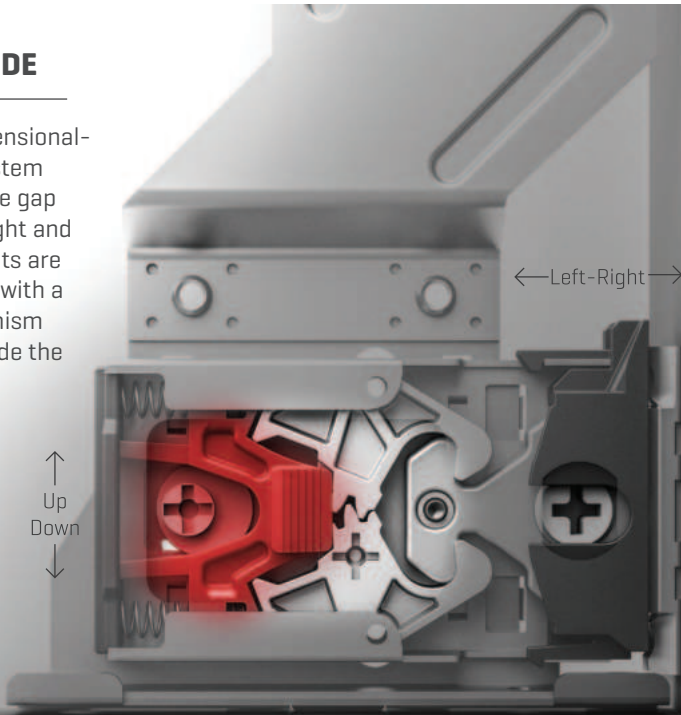


HEIGHT & SIDE

The three-dimensional adjustment system provides precise gap alignment. Height and side adjustments are quick and easy with a special mechanism assembled inside the drawer.

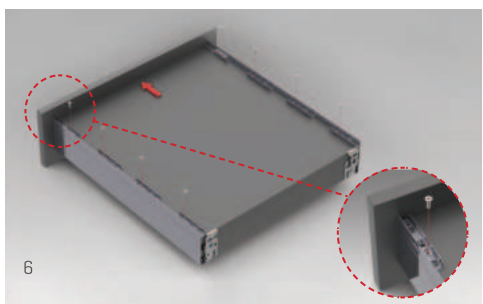
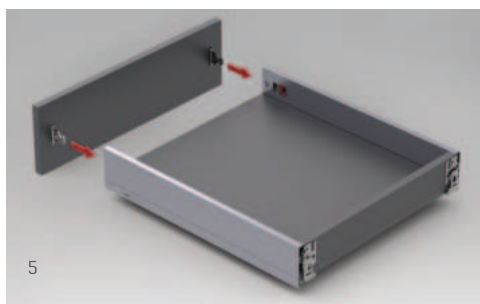
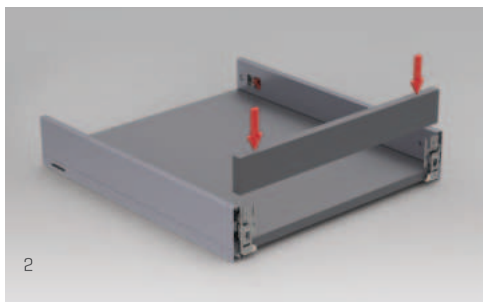
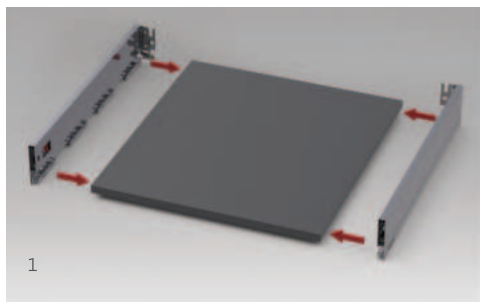
↑
Up
Down
↓

← Left-Right →



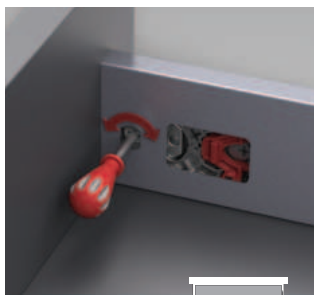
FLOWBOX

ASSEMBLY INSTRUCTIONS

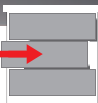


FLOWBOX

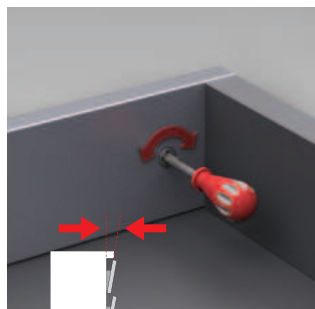
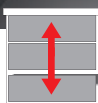
ADJUSTMENT

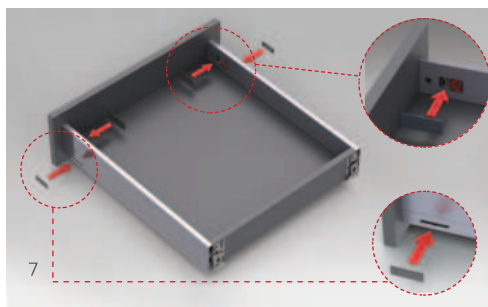
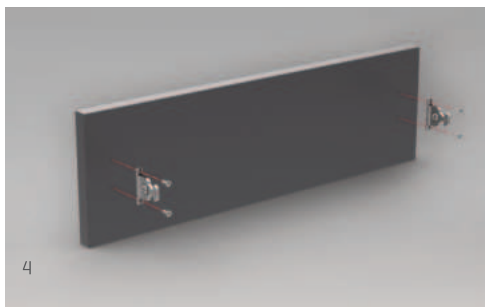
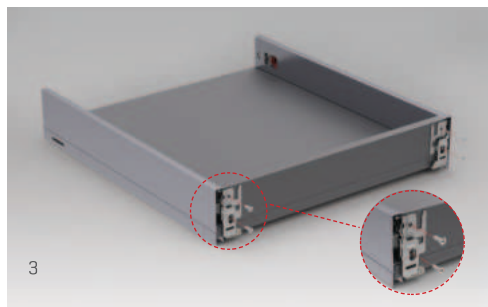


$\pm 1,5$ mm

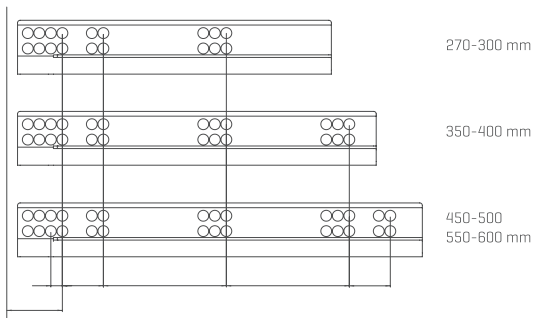


± 2 mm





SCREW LOCATIONS FOR SLIDES



NOMINAL SIZE	106 mm (Inner 58 mm)	PACKING
270 mm	127167 ■ 3 × 1**76	1 Set
300 mm	127167 ■ 3 × 2**76	1 Set
350 mm	127167 ■ 3 × 3**76	1 Set
400 mm	127167 ■ 3 × 4**76	1 Set
450 mm	127167 ■ 3 × 5**76	1 Set
500 mm	127167 ■ 3 × 6**76	1 Set
550 mm	127167 ■ 3 × 7**76	1 Set
600 mm	127167 ■ 3 × 8**76	1 Set

NOMINAL SIZE	138 mm (Inner 90 mm)	PACKING
270 mm	127166 ■ 3 × 1**76	1 Set
300 mm	127166 ■ 3 × 2**76	1 Set
350 mm	127166 ■ 3 × 3**76	1 Set
400 mm	127166 ■ 3 × 4**76	1 Set
450 mm	127166 ■ 3 × 5**76	1 Set
500 mm	127166 ■ 3 × 6**76	1 Set
550 mm	127166 ■ 3 × 7**76	1 Set
600 mm	127166 ■ 3 × 8**76	1 Set

SLIDE [*]	
Soft-Close	8
Push-Open	7
Push-Open Soft-Close	6

Enter the number of your preferred slide to the [*] marked area.

COLOUR [**]	
White	01
Champagne	02
Inox	04
Black	05
Mocha	06
Anthracite	07

Enter the number of your preferred color to the [**] marked area.

NOMINAL SIZE	192 mm (Inner 144 mm)	PACKING
270 mm	127168 ■ 3 × 1**76	1 Set
300 mm	127168 ■ 3 × 2**76	1 Set
350 mm	127168 ■ 3 × 3**76	1 Set
400 mm	127168 ■ 3 × 4**76	1 Set
450 mm	127168 ■ 3 × 5**76	1 Set
500 mm	127168 ■ 3 × 6**76	1 Set
550 mm	127168 ■ 3 × 7**76	1 Set
600 mm	127168 ■ 3 × 8**76	1 Set

NOMINAL SIZE	256 mm (Inner 208 mm)	PACKING
270 mm	127169 ■ 3 × 1**76	1 Set
300 mm	127169 ■ 3 × 2**76	1 Set
350 mm	127169 ■ 3 × 3**76	1 Set
400 mm	127169 ■ 3 × 4**76	1 Set
450 mm	127169 ■ 3 × 5**76	1 Set
500 mm	127169 ■ 3 × 6**76	1 Set
550 mm	127169 ■ 3 × 7**76	1 Set
600 mm	127169 ■ 3 × 8**76	1 Set

BOTTOM PANEL [•]	
16 mm	1
18 mm	2

Enter the number of your preferred bottom panel thickness to the [•] marked area.

FLOWBOX GALLERY RAILING

NOMINAL SIZE	WOODEN BACK PANEL	METAL BACK PANEL	PACKING
270 mm	1279614#1**	1279615#1**	12 Set
300 mm	1279614#2**	1279615#2**	12 Set
350 mm	1279614#3**	1279615#3**	12 Set
400 mm	1279614#4**	1279615#4**	12 Set
450 mm	1279614#5**	1279615#5**	12 Set
500 mm	1279614#6**	1279615#6**	12 Set
550 mm	1279614#7**	1279615#7**	12 Set
600 mm	1279614#8**	1279615#8**	12 Set

COLOUR [**]	
White	01
Champagne	02
Black	05
Mocha	06
Anthracite	07

Enter the number of your preferred color to the [**] marked area.

CONNECTOR [#]	
Screw	1
Dowel	2

Enter the number of your preferred connector to the [#] marked area.

METAL BACK PANEL

	H 58	H 90	H 144	H 208	H 230	H 240	PACKING
450 mm	127962 ■ 01**	127962 ■ 51**	127962 ■ 11**	127962 ■ 71**	127962 ■ 21**	127962 ■ 31**	12 Set
600 mm	127962 ■ 02**	127962 ■ 52**	127962 ■ 12**	127962 ■ 72**	127962 ■ 22**	127962 ■ 32**	12 Set
900 mm	127962 ■ 03**	127962 ■ 53**	127962 ■ 13**	127962 ■ 73**	127962 ■ 23**	127962 ■ 33**	12 Set
1200 mm	127962 ■ 04**	127962 ■ 54**	127962 ■ 14**	127962 ■ 74**	127962 ■ 24**	127962 ■ 34**	12 Set

BOTTOM PANEL THICKNESS - CABIN SIDE PANEL THICKNESS [•]	
16 mm - 16 mm	6
18 mm - 18 mm	9

Enter the number of your preferred bottom panel / cabin side panel thickness to the [•] marked area.

COLOUR [**]	
White	01
Champagne	02
Black	05
Mocha	06
Anthracite	07

Enter the number of your preferred color to the [**] marked area.

FLOWBOX SIDE PANEL

NOMINAL SIZE	106 mm [Inner 58 mm] RIGHT	106 mm [Inner 58 mm] LEFT	PACKING	NOMINAL SIZE	138 mm [Inner 90 mm] RIGHT	138 mm [Inner 90 mm] LEFT	PACKING
270 mm	127161 ■ 1**01	127161 ■ 1**02	24 Pcs	270 mm	127163 ■ 1**01	127163 ■ 1**02	24 Pcs
300 mm	127161 ■ 2**01	127161 ■ 2**02	24 Pcs	300 mm	127163 ■ 2**01	127163 ■ 2**02	24 Pcs
350 mm	127161 ■ 3**01	127161 ■ 3**02	24 Pcs	350 mm	127163 ■ 3**01	127163 ■ 3**02	24 Pcs
400 mm	127161 ■ 4**01	127161 ■ 4**02	24 Pcs	400 mm	127163 ■ 4**01	127163 ■ 4**02	24 Pcs
450 mm	127161 ■ 5**01	127161 ■ 5**02	24 Pcs	450 mm	127163 ■ 5**01	127163 ■ 5**02	24 Pcs
500 mm	127161 ■ 6**01	127161 ■ 6**02	24 Pcs	500 mm	127163 ■ 6**01	127163 ■ 6**02	24 Pcs
550 mm	127161 ■ 7**01	127161 ■ 7**02	24 Pcs	550 mm	127163 ■ 7**01	127163 ■ 7**02	24 Pcs
600 mm	127161 ■ 8**01	127161 ■ 8**02	24 Pcs	600 mm	127163 ■ 8**01	127163 ■ 8**02	24 Pcs

NOMINAL SIZE	192 mm [Inner 144 mm] RIGHT	192 mm [Inner 144 mm] LEFT	PACKING	NOMINAL SIZE	256 mm [Inner 208 mm] RIGHT	256 mm [Inner 208 mm] LEFT	PACKING
270 mm	127162 ■ 1**01	127162 ■ 1**02	12 Pcs	270 mm	127169 ■ 1**01	127169 ■ 1**02	12 Pcs
300 mm	127162 ■ 2**01	127162 ■ 2**02	12 Pcs	300 mm	127169 ■ 2**01	127169 ■ 2**02	12 Pcs
350 mm	127162 ■ 3**01	127162 ■ 3**02	12 Pcs	350 mm	127169 ■ 3**01	127169 ■ 3**02	12 Pcs
400 mm	127162 ■ 4**01	127162 ■ 4**02	12 Pcs	400 mm	127169 ■ 4**01	127169 ■ 4**02	12 Pcs
450 mm	127162 ■ 5**01	127162 ■ 5**02	12 Pcs	450 mm	127169 ■ 5**01	127169 ■ 5**02	12 Pcs
500 mm	127162 ■ 6**01	127162 ■ 6**02	12 Pcs	500 mm	127169 ■ 6**01	127169 ■ 6**02	12 Pcs
550 mm	127162 ■ 7**01	127162 ■ 7**02	12 Pcs	550 mm	127169 ■ 7**01	127169 ■ 7**02	12 Pcs
600 mm	127162 ■ 8**01	127162 ■ 8**02	12 Pcs	600 mm	127169 ■ 8**01	127169 ■ 8**02	12 Pcs

BOTTOM PANEL [■]	
16 mm	1
18 mm	2

COLOUR [**]	
White	01
Champagne	02
Inox	04
Black	05
Mocha	06
Anthracite	07

Enter the number of your preferred bottom panel thickness to the [■] marked area.

Enter the number of your preferred color to the [**] marked area.

FLOWBOX SLIDE

NOMINAL SIZE	SOFT-CLOSE		PUSH-OPEN		SOFT-CLOSE & PUSH-OPEN		PACKING
	RIGHT	LEFT	RIGHT	LEFT	RIGHT	LEFT	
270 mm	127168310021	127168310022	127167310021	127167310022	127166310021	127166310022	12 Pcs
300 mm	127168320021	127168320022	127167320021	127167320022	127166320021	127166320022	12 Pcs
350 mm	127168330021	127168330022	127167330021	127167330022	127166330021	127166330022	12 Pcs
400 mm	127168340021	127168340022	127167340021	127167340022	127166340021	127166340022	12 Pcs
450 mm	127168350021	127168350022	127167350021	127167350022	127166350021	127166350022	12 Pcs
500 mm	127168360021	127168360022	127167360021	127167360022	127166360021	127166360022	12 Pcs
550 mm	127168370021	127168370022	127167370021	127167370022	127166370021	127166370022	12 Pcs
600 mm	127168380021	127168380022	127167380021	127167380022	127166380021	127166380022	12 Pcs

FLOWBOX DECORATIVE COVERS

INNER		OUTER	PACKING	COLOUR [**]		CONNECTOR	CODE	DEFINITION	PACKING
1279651**[x][x][x]		1279652**[x][x][x]	1000 Pcs (Right-Left)	White	01	Screw	127974121	FlowBox Front Connector	500 Pcs
				Champagne	02		127964122	FlowBox Upper Front Connector (Only Needed for H 192 & H 256 Side)	500 Pcs
LOGO [x][x][x]				Black	05	Dowel	127964125	FlowBox Front Connector	500 Pcs
SAMET	001			Mocha	06		127964129	FlowBox Upper Front Connector (Only Needed for H 192 & H 256 Side)	500 Pcs
NO LOGO	999			Anthracite	07				

Enter the number of your preferred color to the [**] marked area.

FLOWBOX FRONT COLLECTOR

samET



www.sametglobal.com



sametinternational



samet_global



SametGroup



Samet Kalıp ve Madeni Eşya San. ve Tic. A.Ş.