

Multi Mech

Double Lift-Up Door System



Greenply

samer

*Simply Perfect
Completely Nature*



SAMET Lift Systems bring you a perfect harmony and flawless silence thanks to its modern lines, exclusive colors and fully mechanical structure.





Perfect Movement

Multi  Mech

Inspired by nature strenght and movement, Multimech brings wall units to life...

Multi-Mech offers perfect solution for double door wall units with its completely mechanical structure for best performance.



Flawless opening and closing...

Multi-Mech's smooth upword opening feature combined with its soft-closing function move in perfect silence.



Perfect Stability

Holds in any position like the perfect pose...

Multi-Mech can hold itself at any desired level.



High loading capacity...

Multi-Mech holds up to 30 kg, depending on the dimensions and material to be used such as wood or glass and also the door weight.



Perfect Mechanism



Different dimensions to suit every design...

Whether very high or very wide, our mechanism is suitable with cabinet height between 480-1040 mm and width up to 1200 mm.

Material options inspired by nature...

A touch of newness... Multi-Mech can be used with wood and aluminum framed glass door options.



Exclusive colour options...

Multi-Mech offers five colors for an elegant and stylish appearance. White, grey, black, anthracite and mocha create perfect harmony with the furniture.



Anthracite



Grey



Black



White



Mocha



More freedom with customization...

...is possible for different brand names.



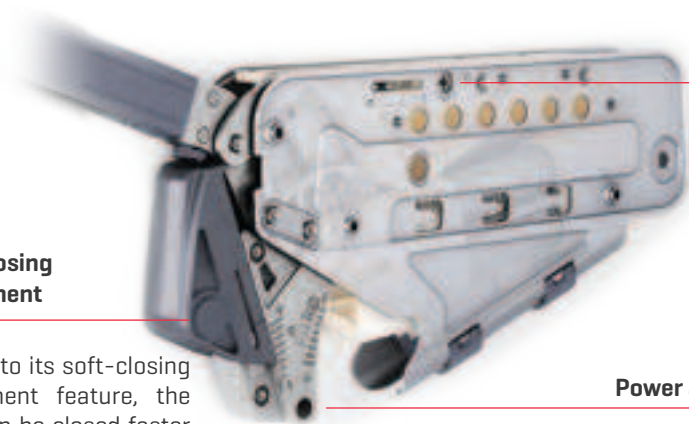
Perfectly Safe

Finger pinch protection...

ensures quality safety with the interim hinge design to avoid finger pinches.



Perfect Adjustment



Soft-closing adjustment

Thanks to its soft-closing adjustment feature, the door can be closed faster or slower.

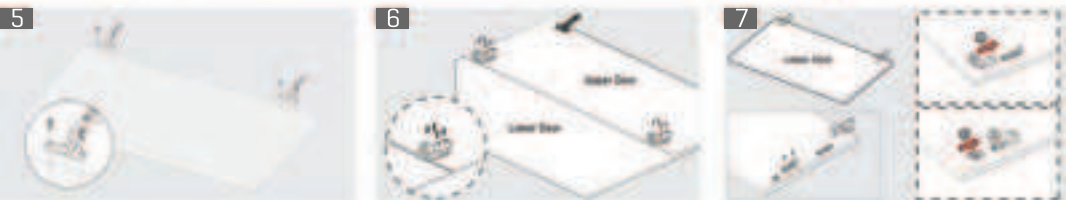
Opening angle

Multi-Mech provides two different opening angles... 90 and 110 degree opening...

Power adjustment

Ensures the best loading power for different door weights...

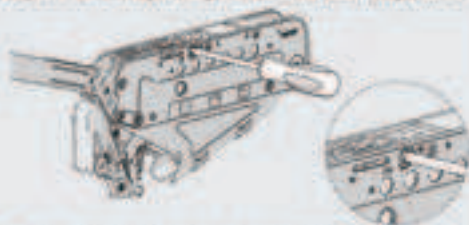




Opening Angle Adjustment



Please make sure to align the pins on the preferred opening angle.
 For 90 degree opening, please lower the doors below 90 degree angle and then turn the screws towards 90 degree direction. For 110 degree opening, please turn the screws towards 110 degree direction.



Important Note: Please make the opening angle adjustment with a correct screwdriver with a #2 Phillips tip.

Self Closing (Damper) Adjustment



1 Take out the damper safety pin.

2 Place the damper safety pin.

3 Adjustment on negative direction results better door closing effect, adjustment on positive direction results slower door closing effect.

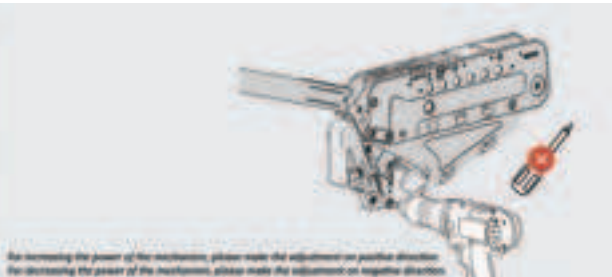


Important: Do not make the adjustment with a power screwdriver or a power drill.

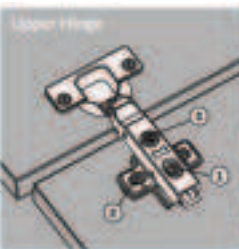
Warning: Please pay attention to the screw tip for placing the damper safety pin.



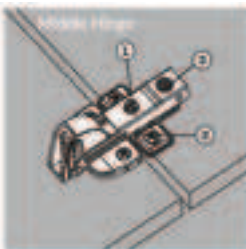
Door adjustment for door weight



For increasing the power of the mechanism, please make the adjustment on positive direction. For decreasing the power of the mechanism, please make the adjustment on negative direction.



Upper Hinge



Lower Hinge



Caution: Lever arm can spring up and cause injury.

Left/right, up/down and back/forward adjustment can be done as shown in the image for better alignment.

Code	Arm Size	Power	Package
124081610084**	Telescopic Arm 145 mm	A1	1 Set
124082610084**	Telescopic Arm 195 mm	A1	1 Set
124085610084**	Telescopic Arm 237 mm	A1	1 Set
124084610084**	Telescopic Arm 345 mm	A1	1 Set
124081710084**	Telescopic Arm 145 mm	B1	1 Set
124082710084**	Telescopic Arm 195 mm	B1	1 Set
124085710084**	Telescopic Arm 237 mm	B1	1 Set
124084710084**	Telescopic Arm 345 mm	B1	1 Set
124081810084**	Telescopic Arm 145 mm	C1	1 Set
124082810084**	Telescopic Arm 195 mm	C1	1 Set
124085810084**	Telescopic Arm 237 mm	C1	1 Set
124084810084**	Telescopic Arm 345 mm	C1	1 Set

Color [**]	
White	01
Grey	03
Black	05
Mocha	06
Anthracite	07

Cabinet Height (mm)	Arm Length (mm)
480 - 599	145
600 - 699	195
700 - 859	237
860 - 1040	345

Cabinet Height (mm)	LOADING CAPACITY - Two Door Total Weight [Gr.]*					
	Light Load (A1)		Medium Load (B1)		Heavy Load (C1)	
	min.	max.	min.	max.	min.	max.
1001 - 1040	2300	5000	5000	9000	9000	14500
901 - 1000	2400	5500	5500	9500	9500	15000
861 - 900	2500	6000	6000	11000	11000	17000
801 - 860	2600	6500	6500	11500	11500	18000
761 - 800	2800	7200	7200	12500	12500	19000
721 - 760	2900	7500	7500	13000	13000	19500
701 - 720	3200	8000	8000	14000	14000	21000
651 - 700	3500	8500	8500	14500	14500	21500
601 - 650	4000	9000	9000	16000	16000	24000
561 - 600	4500	10000	10000	17000	17000	25000
501 - 560	5000	10500	10500	17500	17500	27000
480 - 500	5500	11500	11500	20000	20000	29000

*Handle weight is included as 100 gr.



www.greenplysamet.com

- Greenply-Samet
- GreenplySamet
- GreenplySamet
- GreenplySamet
- GreenplySamet