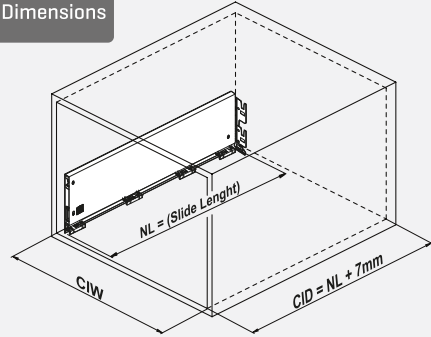


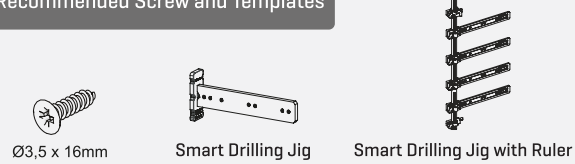


Cabinet Dimensions

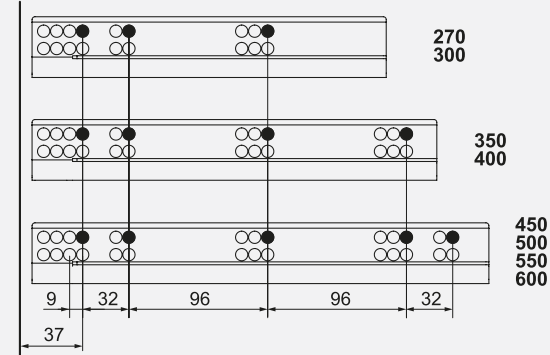


CIW : Cabinet Internal Width
 CID : Cabinet Internal Depth
 NL : Nominal Length
 KG : Front Panel Width
 B : Front Panel Side Overlay
 X : Front Panel Bottom Overlay

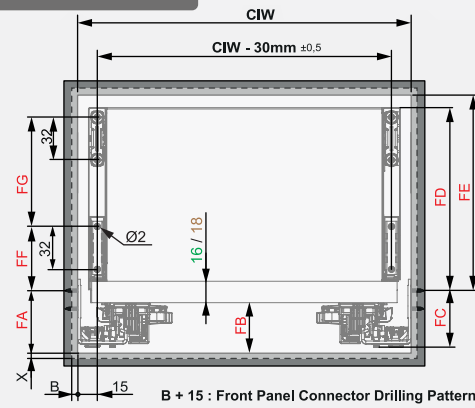
Recommended Screw and Templates



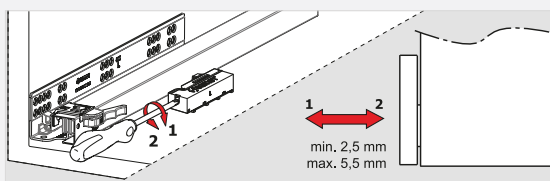
Screw Location for The Slides *Screw the slide from marked holes.



Slide Mounting Dimensions



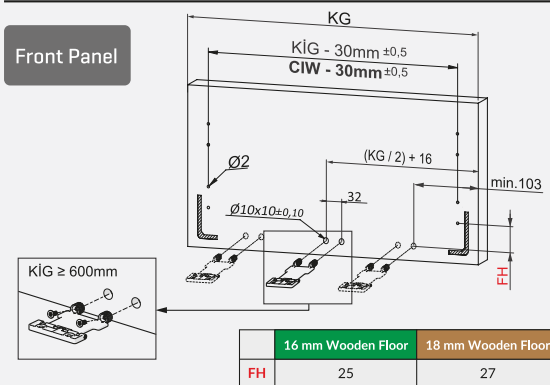
Push-Open Slide Adjustment



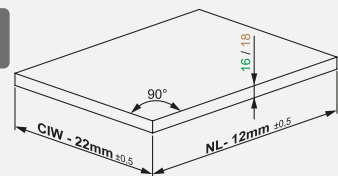
16 mm Wooden Floor Application				18 mm Wooden Floor Application				
	SC	PO - YBA			SC	PO - YBA		
	H.192	H.256	H.192	H.256	H.192	H.256	H.192	H.256
FA	41		43		41		43	
FB	34		36		34		36	
FC	39		42		39		42	
FD	153	185	153	185	155	187	155	187
FE	157	189	157	189	159	191	159	191
FF	50		50		52		52	
FG	96	160	96	160	96	160	96	160

SC : Soft Close Slide
 PO : Push-Open Slide
 YBA : Push-Open Soft Close Slide

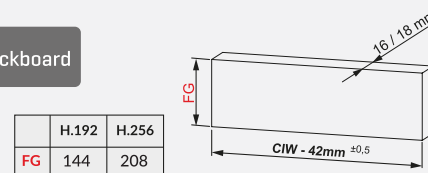
Front Panel



Wooden Drawer Floor

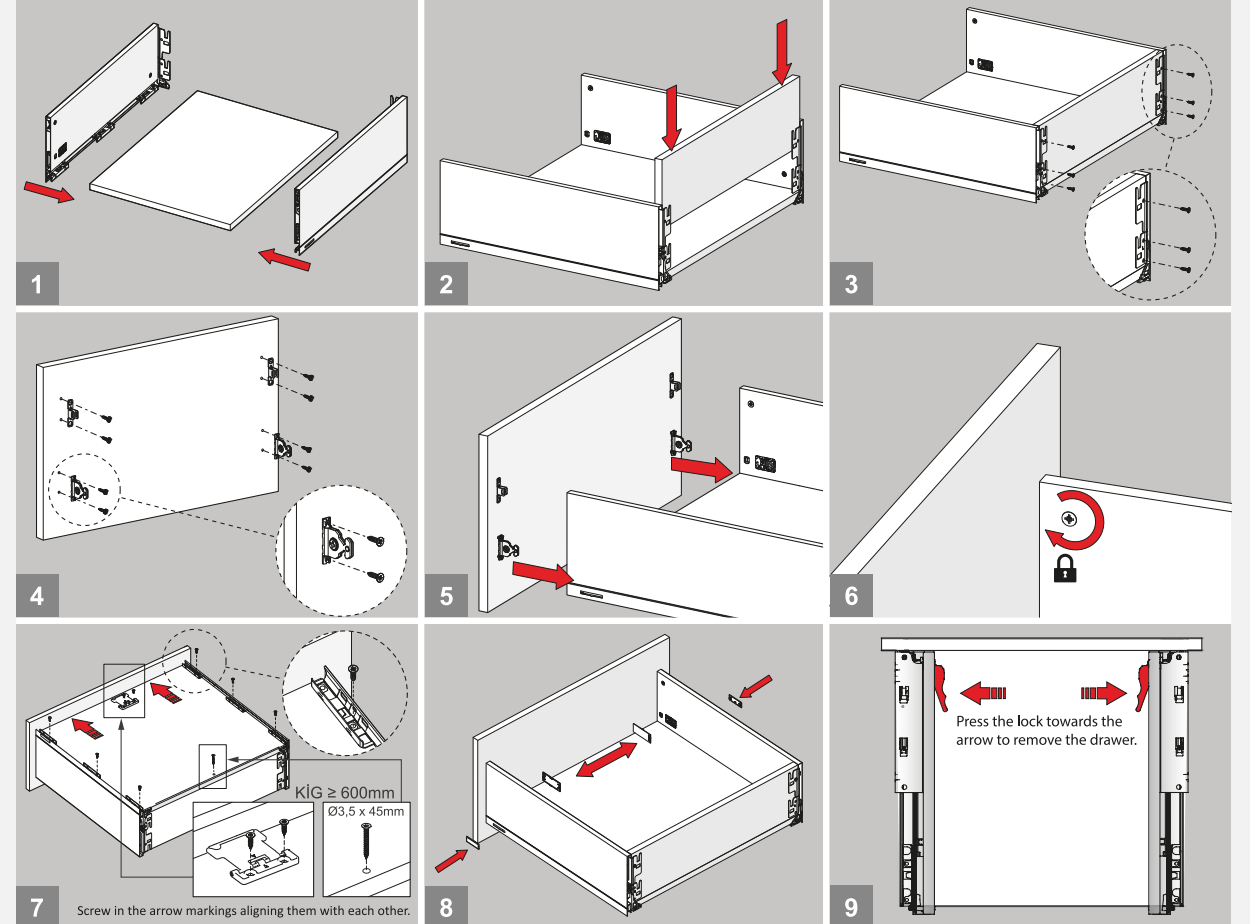


Wooden Backboard

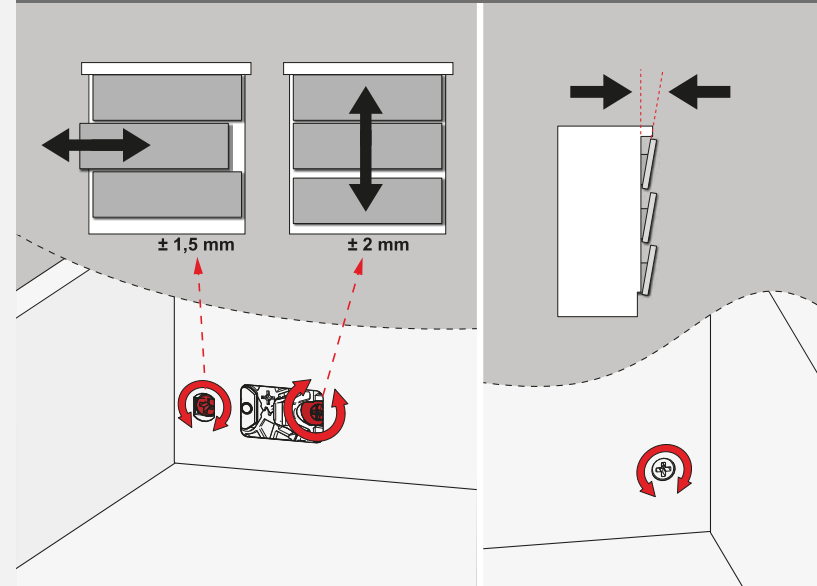


	H.192	H.256
FG	144	208

Assembly



Adjustment



Important

