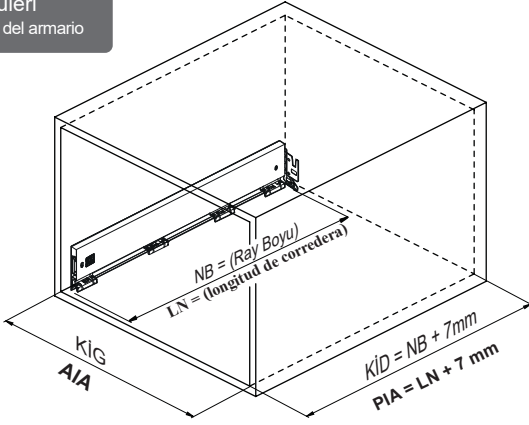




Kabin Ölçüleri Dimensiones del armario



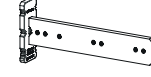
KİG : Kabin İç Genişliği
KİD : Kabin İç Derinliği
NB : Nominal Boy
KG : Ön Panel Genişliği
B : Klapa Yan Binisi
X : Klapa Alt Binisi

AIA: Ancho interior del armario
PIA: Profundidad interior del armario
LN: Longitud nominal
KG: Ancho del panel delantero
B: Superposición lateral del panel delantero
X: Superposición lateral del panel inferior

Tavsiye Edilen Vida ve Şablonlar Plantillas y tornillos recomendados



Ø3,5 x 16mm



Smart El Tipi Ray
Montaj Şablonu

Plantilla para taladraz inteligente

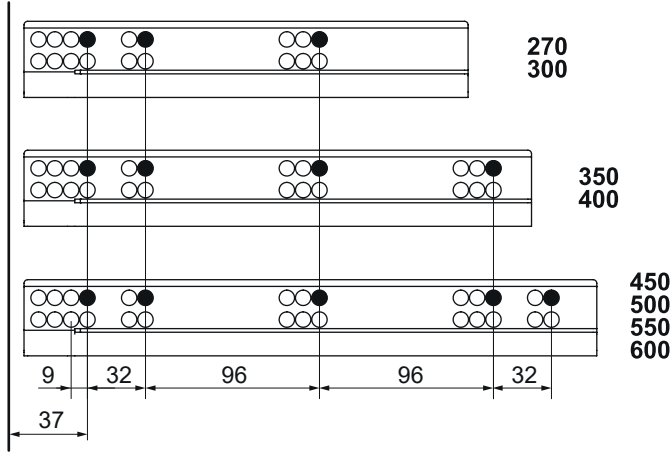


Smart Cetveli Ray
Montaj Şablonu

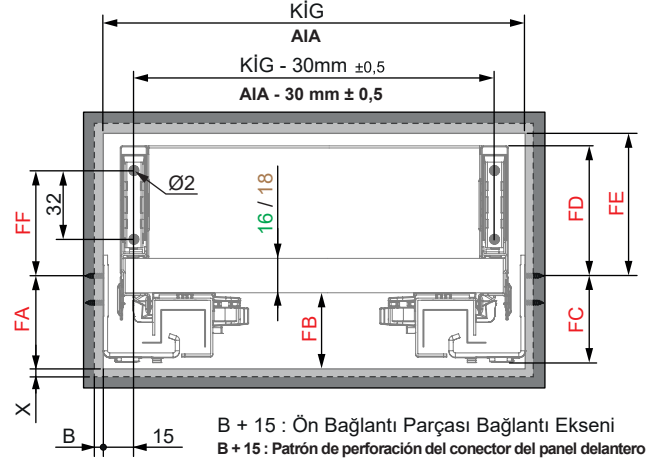
Plantilla para taladraz inteligente con regla

Rayların Vida Konum Ölçüleri Ubicación de los tornillos para las correderas

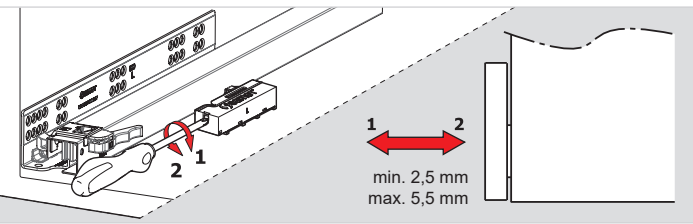
Rayı işaretlenmiş deliklerden vidalayınız.
Atornille la corredera en los agujeros marcados.



Gövdede Yer İhtiyacı Dimensiones de montaje de corredera



Bas - Aç Ray Ayarı Ajuste para corredera con apertura a presión

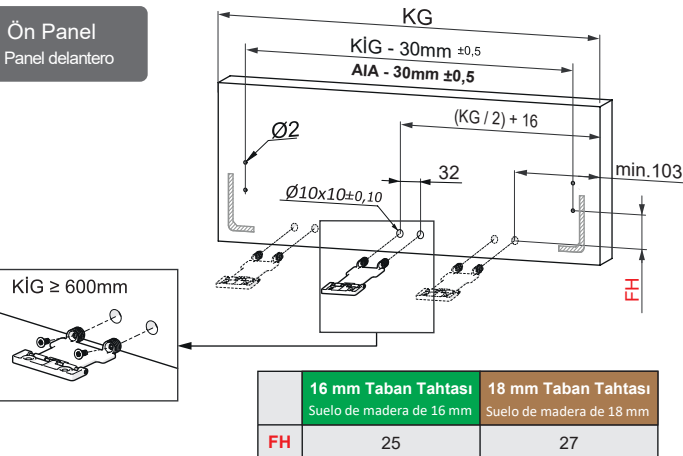


16 mm Taban Tahtası Uygulaması Aplicación de suelo de madera de 16 mm				
	SC		PO - YBA	
	H.106	H.138	H.106	H.138
FA	41		43	
FB	34		36	
FC	39		42	
FD	67	99	67	99
FE	71	103	71	103
FF	50		50	

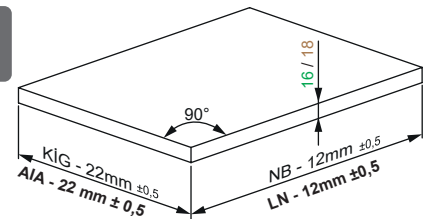
18 mm Taban Tahtası Uygulaması Aplicación de suelo de madera de 18 mm				
	SC		PO - YBA	
	H.106	H.138	H.106	H.138
FA	41		43	
FB	34		36	
FC	39		42	
FD	69	101	69	101
FE	73	105	73	105
FF	52		52	

AA / Yavaşlatıcı Ray
AA / Bas-Aç Ray
AA / Yavaşlatıcı Bas-Aç Ray

Ön Panel Panel delantero

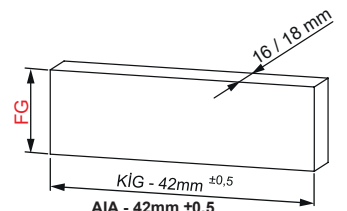


Ahşap Çekmece Tabanı Suelo de cajón de madera



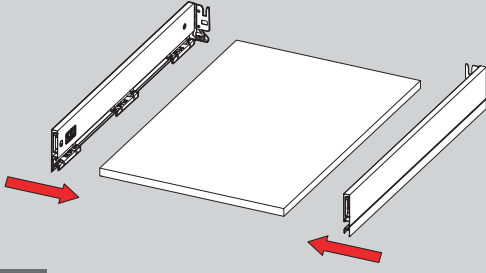
Ahşap Arkalık Respaldo de madera

	H.106	H.138
FG	58	90

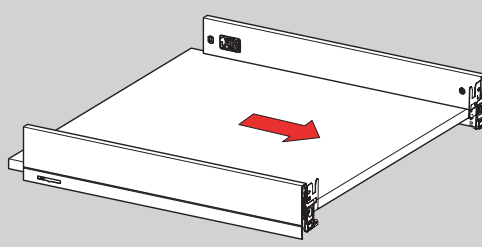




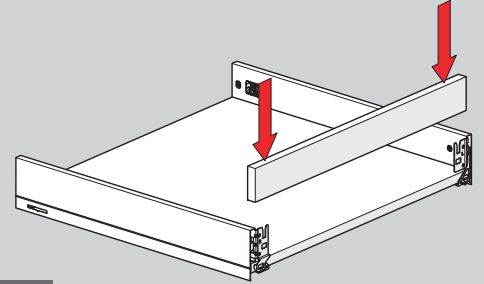
Montaj / Montaje



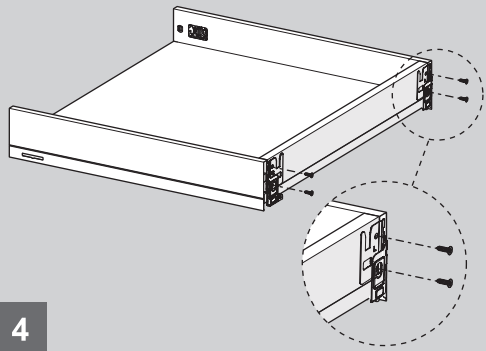
1



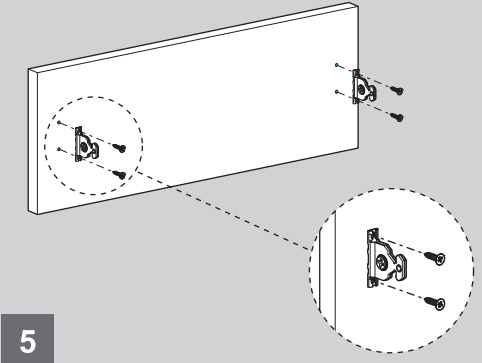
2



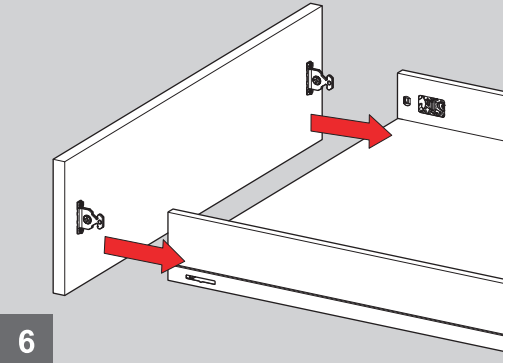
3



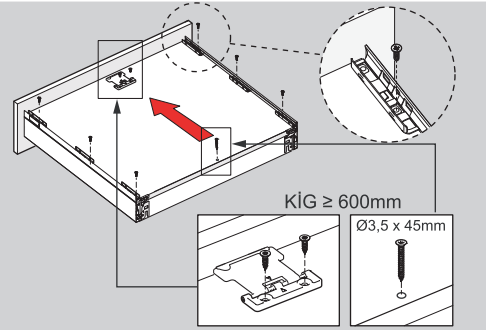
4



5

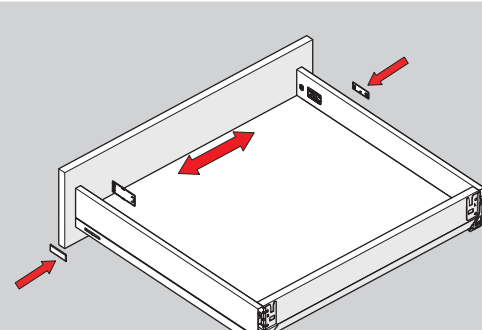


6



7

Ok işaretlerini karşılıklı hizalayarak vidalayınız.
Atornille las marcas de flecha alineándolas entre sí.

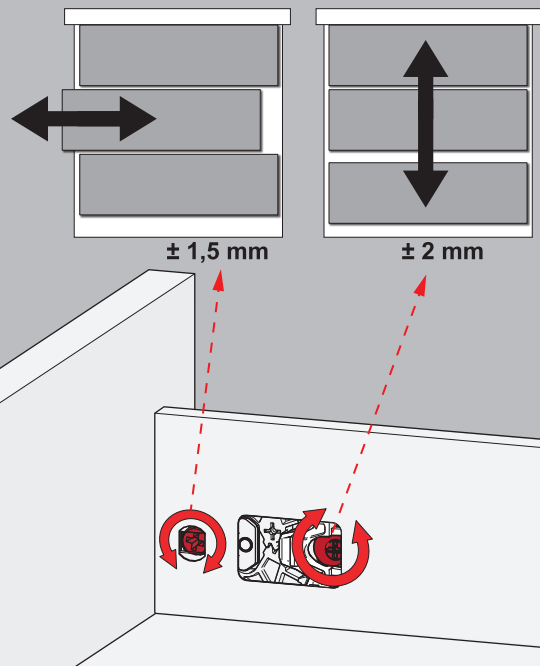


8

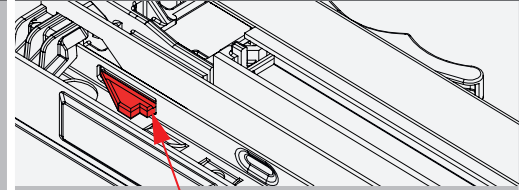


9

Ayar / Ajuste



Önemli / Importante



Kilit tırnağının 2'nci kademesine geldiğinden emin olunuz.
Asegúrese de que la lengüeta de bloqueo esté en la segunda posición.

