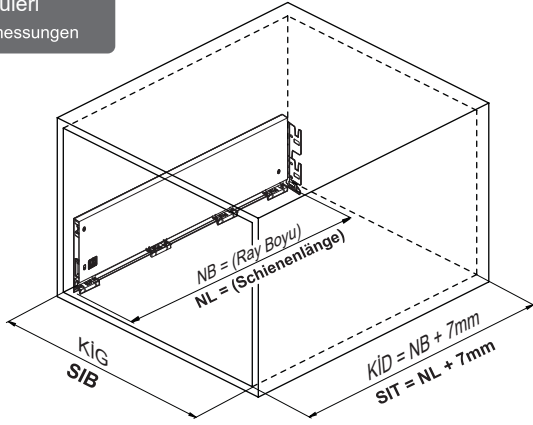




## Kabin Ölçüleri Schrankabmessungen

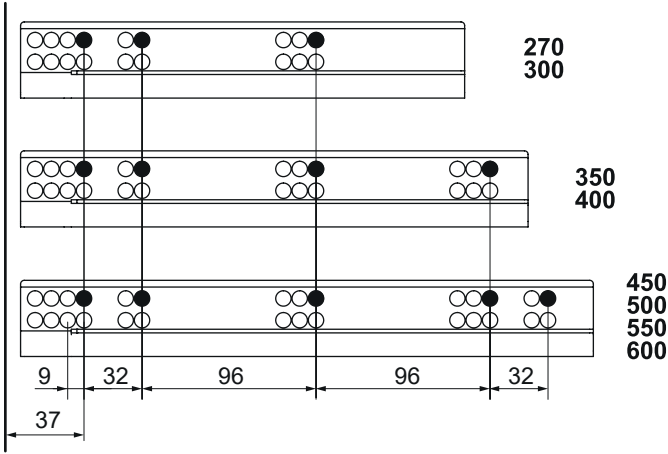


KİG : Kabin İç Genişliği  
KİD : Kabin İç Derinliği  
NB : Nominal Boy  
KG : Ön Panel Genişliği  
B : Klapa Yan Binisi  
X : Klapa Alt Binisi

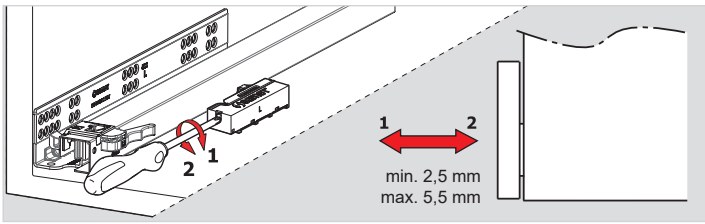
SIB : Schrank-Innenbreite  
SIT : Schrank-Innentiefe  
KG : Breite der Frontblende  
B : Seitliche Überlagerung Frontblende  
X : Überlagerung Unterseite Frontblende

## Rayların Vida Konum Ölçüleri Schraubenposition der Schienenführungen

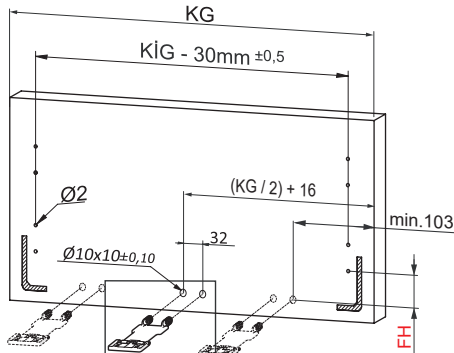
Rayı işaretlenmiş deliklerden vidalayınız. Schrauben Sie die Schiene an den markierten Löchern fest.



## Bas - Aç Ray Ayarı Anpassung von Push-Open-Führungen



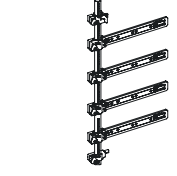
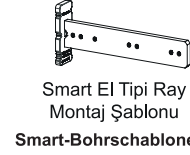
## Ön Panel Frontblende



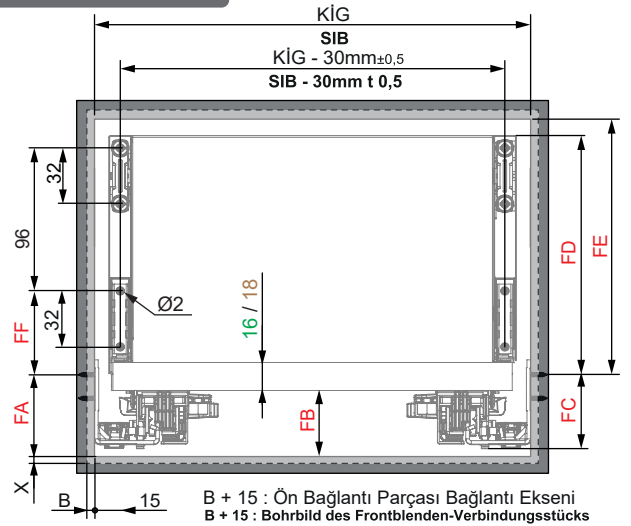
KIG ≥ 600mm

	16 mm Taban Tahtası 16 mm Holzboden	18 mm Taban Tahtası 18 mm Holzboden
FH	25	27

## Tavsiye Edilen Vida ve Şablonlar Empfohlene Schrauben und Schablonen



## Gövdede Yer İhtiyacı Montagemaße der Führungsschiene



B + 15 : Ön Bağlantı Parçası Bağlantı Eksenini  
B + 15 : Bohrbild des Frontblenden-Verbindungsstücks

## 16 mm Taban Tahtası Uygulaması 16 mm Holzboden-Anwendung

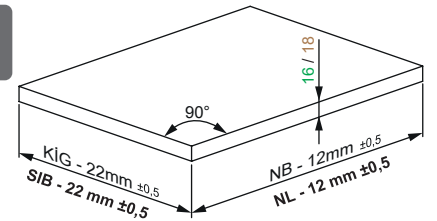
	SC		PO - YBA	
	H.192	H.256	H.192	H.256
FA	41		43	
FB	34		36	
FC	39		42	
FD	153	185	153	185
FE	157	189	157	189
FF	50		50	

## 18 mm Taban Tahtası Uygulaması 18 mm Holzboden-Anwendung

	SC		PO - YBA	
	H.192	H.256	H.192	H.256
FA	41		43	
FB	34		36	
FC	39		42	
FD	155	187	155	187
FE	159	191	159	191
FF	52		52	

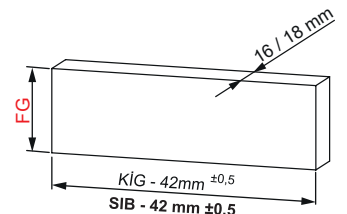
SC : Soft Close-Führungen / Yavaşlatıcı Ray  
PO : Push-Open-Führungen / Bas-Aç Ray  
YBA : Soft Close-/Push-Open-Führungen / Yavaşlatıcı Bas-Aç Ray

## Ahşap Çekmece Tabanı Schubladenboden aus Holz



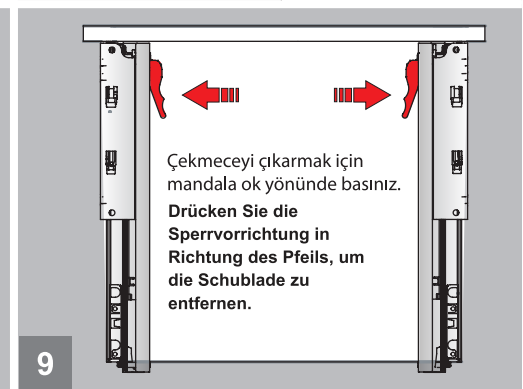
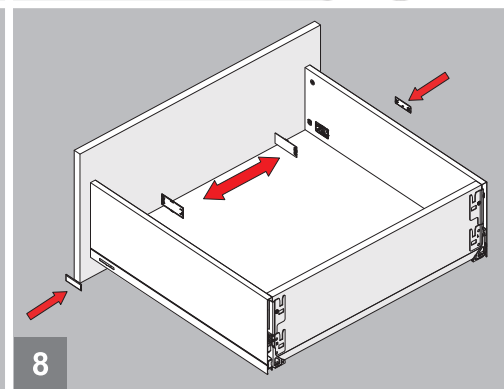
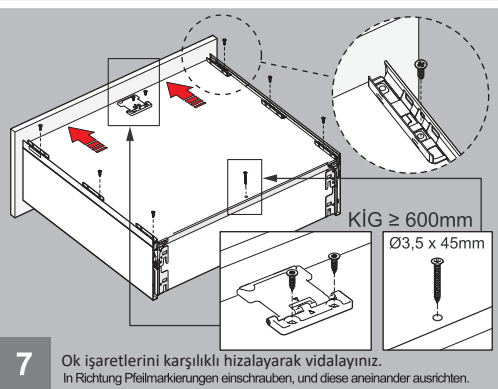
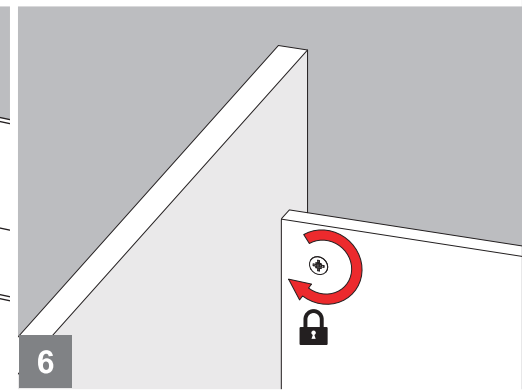
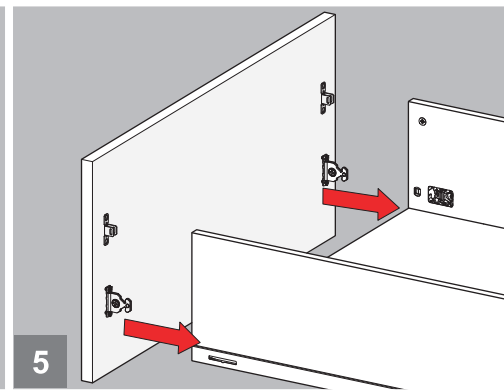
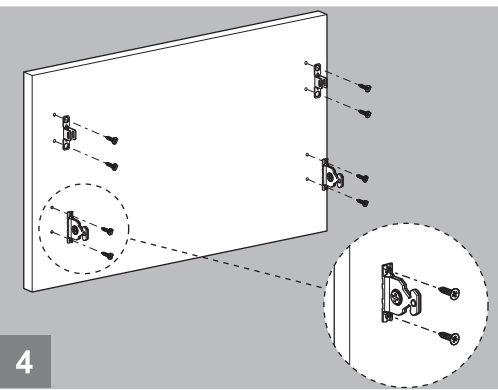
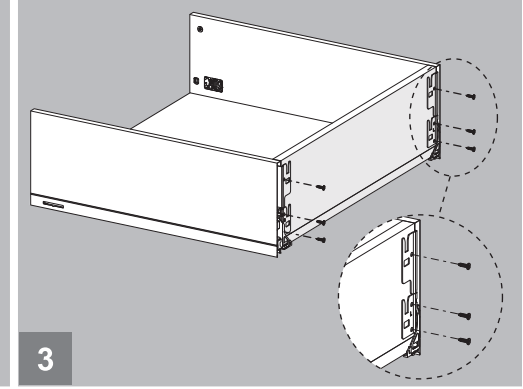
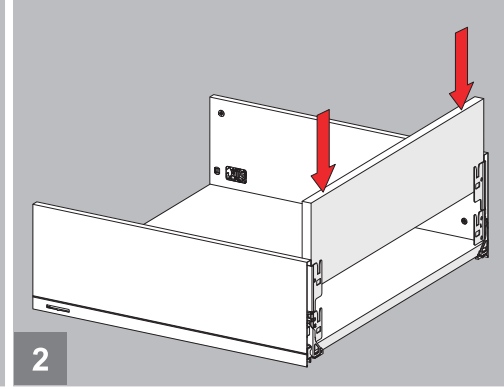
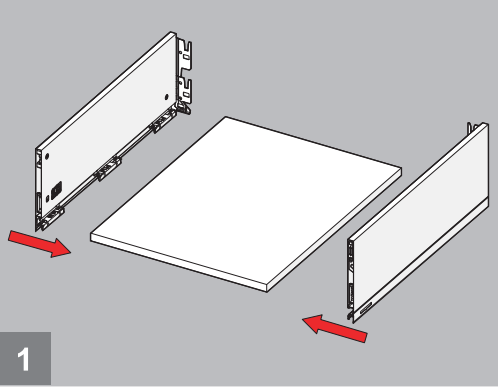
## Ahşap Arkalık Holzrückwand

	H.192	H.256
FG	144	208

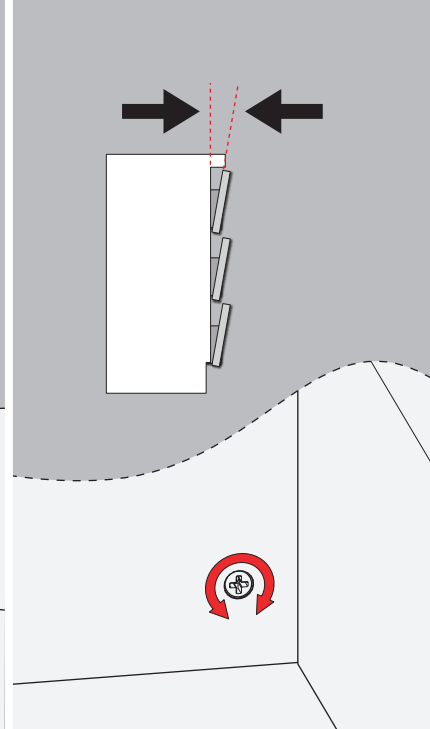
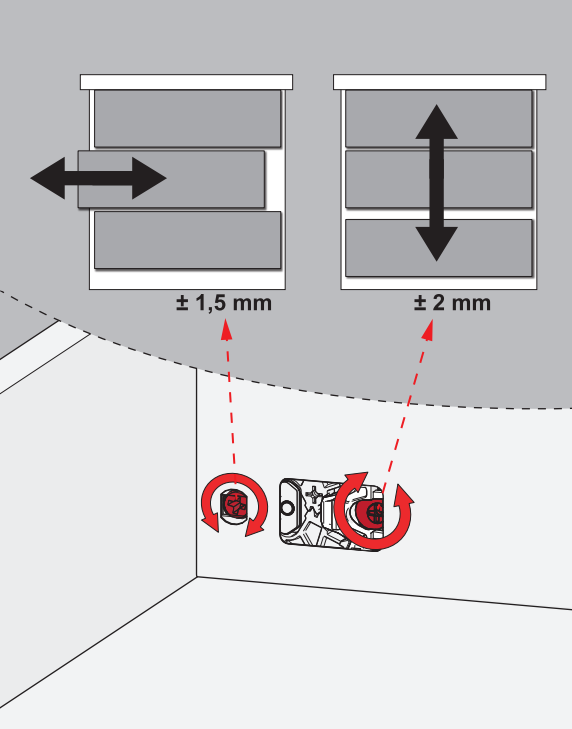




## Montaj / Montage



## Ayar / Justierung



## Önemli / Wichtig

