

# ALPHABOX

new generation drawer systems



**samet**



## **Alphabox, ahead of its time design with minimalist form...**

---

Alphabox provides an innovative and ideal touch to living areas with perfect motion technology and modern lines.



## **Maximum Comfort**

---

Sleek design maximises space and comfort in drawers.



WHITE



GREY



ANTHRACITE

## Colours

---

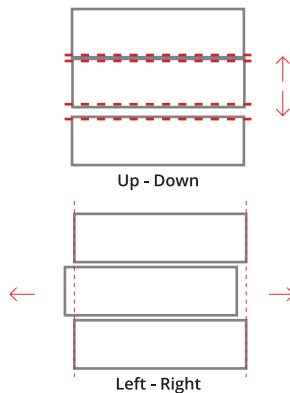
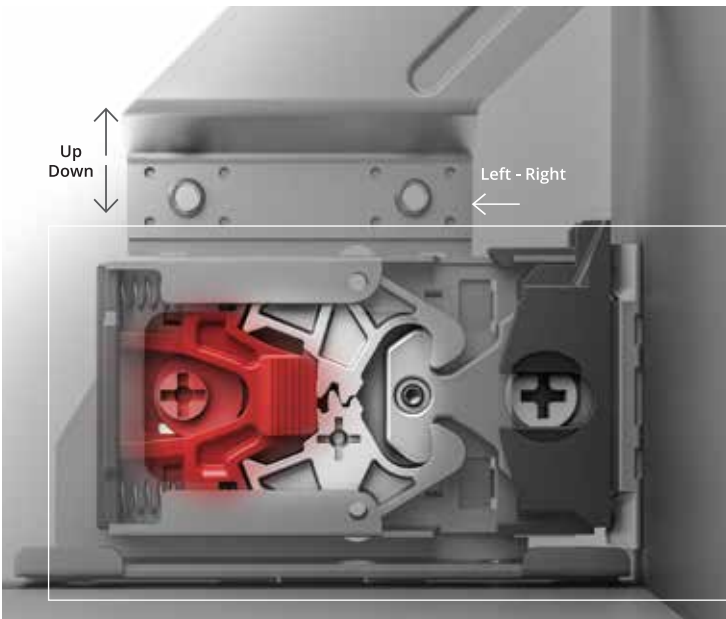
Design freedom with impressive colour options.

## Synchronisation

---

Perfect movement feature with advanced synchronisation technology.





## Height & Side

The three-dimensional adjustment system provides precise gap alignment. Height and side adjustments can be done in an easy way with a special mechanism assembled inside the drawer.



## Advanced Technology

Thanks to Alphabox's state-of-the-art synchronisation technology and impeccable opening and closing features, drawers open with a simple touch and close in complete silence.

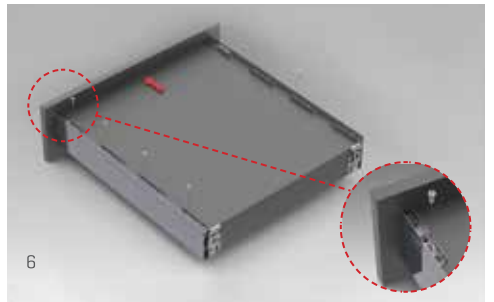
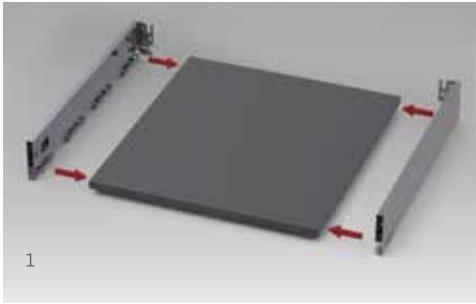


## **INVARIA** Inner Drawer Systems

---

Alphabox offers unique and convenient solutions in inner drawer system with its elegant design.

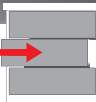
# ALPHABOX



## ALPHABOX | Power | ADJUSTMENT



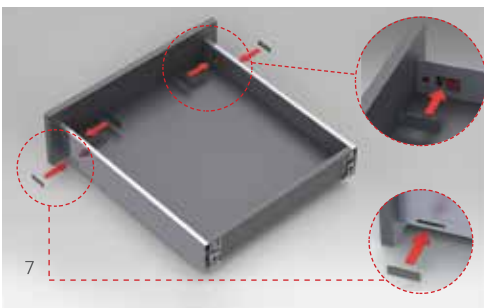
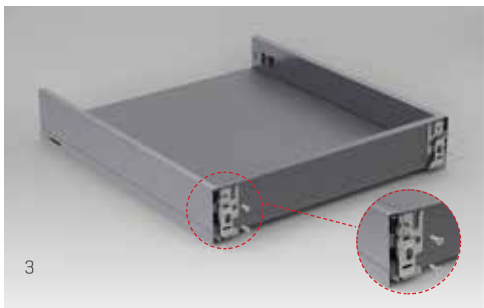
±1,5 mm



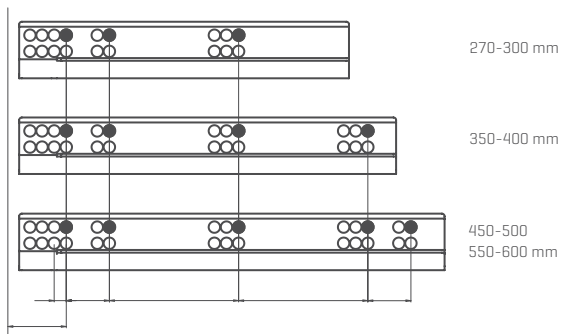
±2 mm



# ALPHABOX



## SCREW LOCATIONS FOR SLIDES



# ALPHABOX

## WHOLESALE PACKAGE CODE LIST

| NOMINAL SIZE |                |             |
|--------------|----------------|-------------|
| 270 mm       | 127177●3○1**45 | 6 Set / Box |
| 300 mm       | 127177●3○2**45 | 6 Set / Box |
| 350 mm       | 127177●3○3**45 | 6 Set / Box |
| 400 mm       | 127177●3○4**45 | 6 Set / Box |
| 450 mm       | 127177●3○5**45 | 6 Set / Box |
| 500 mm       | 127177●3○6**45 | 6 Set / Box |
| 550 mm       | 127177●3○7**45 | 6 Set / Box |
| 600 mm       | 127177●3○8**45 | 6 Set / Box |

| BOTTOM PANEL [ ● ] |   |
|--------------------|---|
| 16 mm              | 3 |
| 18 mm              | 4 |

Enter the number of your preferred bottom panel thickness to the [ ● ] marked area.

| COLOUR [ ** ] |    |
|---------------|----|
| White         | 01 |
| Grey          | 03 |
| Anthracite    | 07 |

Enter the number of your preferred color to the [ \*\* ] marked area.

| SLIDE [ ○ ]          |   |
|----------------------|---|
| Soft Close           | 8 |
| Push Open            | 7 |
| Push Open Soft Close | 6 |

Enter the number of your preferred slide to the [ ○ ] marked area.

## ALPHABOX GALLERY RAILING

| NOMINAL SIZE | WOODEN BACK PANEL | METAL BACKPANEL | PACKING |
|--------------|-------------------|-----------------|---------|
| 270 mm       | 1279714●1**       | 1279715●1**     | 12 Set  |
| 300 mm       | 1279714●2**       | 1279715●2**     | 12 Set  |
| 350 mm       | 1279714●3**       | 1279715●3**     | 12 Set  |
| 400 mm       | 1279714●4**       | 1279715●4**     | 12 Set  |
| 450 mm       | 1279714●5**       | 1279715●5**     | 12 Set  |
| 500 mm       | 1279714●6**       | 1279715●6**     | 12 Set  |
| 550 mm       | 1279714●7**       | 1279715●7**     | 12 Set  |
| 600 mm       | 1279714●8**       | 1279715●8**     | 12 Set  |

| CONNECTOR [ ● ] |   |
|-----------------|---|
| Screw           | 1 |
| Dowel           | 2 |

Enter the number of your preferred connector to the [ ● ] marked area.

## METAL BACKPANEL

| NOMINAL SIZE | H 63        | H 144       | PACKING |
|--------------|-------------|-------------|---------|
| 450 mm       | 127972■01** | 127972■11** | 12 Pcs  |
| 600 mm       | 127972■02** | 127972■12** | 12 Pcs  |
| 900 mm       | 127972■03** | 127972■13** | 12 Pcs  |
| 1200 mm      | 127972■04** | 127972■14** | 12 Pcs  |

| COLOUR [ ** ] |    |
|---------------|----|
| White         | 01 |
| Grey          | 03 |
| Black         | 05 |
| Anthracite    | 07 |

Enter the number of your preferred color to the [ \*\* ] marked area.

| BOTTOM PANEL THICKNESS - CABIN SIDE [ ■ ] |   |
|---|---|
| 16 mm - 16 mm                             | 6 |
| 18 mm - 18 mm                             | 9 |

Enter the number of your preferred bottom panel / cabin side panel thickness to the [ ■ ] marked area.



### ALPHABOX SIDE PANEL

| NOMINAL SIZE | RIGHT        | LEFT         | PACKING |
|--------------|--------------|--------------|---------|
| 270 mm       | 127171●1**01 | 127171●1**02 | 24 Pcs  |
| 300 mm       | 127171●2**01 | 127171●2**02 | 24 Pcs  |
| 350 mm       | 127171●3**01 | 127171●3**02 | 24 Pcs  |
| 400 mm       | 127171●4**01 | 127171●4**02 | 24 Pcs  |
| 450 mm       | 127171●5**01 | 127171●5**02 | 24 Pcs  |
| 500 mm       | 127171●6**01 | 127171●6**02 | 24 Pcs  |
| 550 mm       | 127171●7**01 | 127171●7**02 | 24 Pcs  |
| 600 mm       | 127171●8**01 | 127171●8**02 | 24 Pcs  |

| BOTTOM PANEL [●] |   |
|------------------|---|
| 16 mm            | 7 |
| 18 mm            | 8 |

Enter the number of your preferred bottom panel thickness to the [●] marked area.

| COLOUR (**) |    |
|-------------|----|
| White       | 01 |
| Grey        | 03 |
| Black       | 05 |
| Anthracite  | 07 |

Enter the number of your preferred color to the (\*\*) marked area.

### ALPHABOX SLIDE

| NOMINAL SIZE | SOFT CLOSE   |              | PUSH OPEN    |              | SOFT CLOSE & PUSH OPEN |              | PACKING |
|--------------|--------------|--------------|--------------|--------------|------------------------|--------------|---------|
|              | RIGHT        | LEFT         | RIGHT        | LEFT         | RIGHT                  | LEFT         |         |
| 270 mm       | 127178310001 | 127178310002 | 127177310001 | 127177310002 | 127176310001           | 127176310001 | 12 Pcs  |
| 300 mm       | 127178320001 | 127178320002 | 127177320001 | 127177320002 | 127176320001           | 127176320001 | 12 Pcs  |
| 350 mm       | 127178330001 | 127178330002 | 127177330001 | 127177330002 | 127176330001           | 127176330001 | 12 Pcs  |
| 400 mm       | 127178340001 | 127178340002 | 127177340001 | 127177340002 | 127176340001           | 127176340001 | 12 Pcs  |
| 450 mm       | 127178350001 | 127178350002 | 127177350001 | 127177350002 | 127176350001           | 127176350001 | 12 Pcs  |
| 500 mm       | 127178360001 | 127178360002 | 127177360001 | 127177360002 | 127176360001           | 127176360001 | 12 Pcs  |
| 550 mm       | 127178370001 | 127178370002 | 127177370001 | 127177370002 | 127176370001           | 127176370001 | 12 Pcs  |
| 600 mm       | 127178380001 | 127178380002 | 127177380001 | 127177380002 | 127176380001           | 127176380001 | 12 Pcs  |

### ALPHABOX DECORATIVE COVERS

| INNER        | OUTER        | PACKING               |
|--------------|--------------|-----------------------|
| 1279751**001 | 1279752**○○○ | 1000 Pcs (Right-Left) |

| COLOUR (**) |    |
|-------------|----|
| White       | 01 |
| Grey        | 03 |
| Black       | 05 |
| Anthracite  | 07 |

Enter the number of your preferred color to the (\*\*) marked area.

| LOGO [○○○] |     |
|------------|-----|
| Samet      | 001 |
| No Logo    | 999 |

Enter the number of your preferred logo number to the [○○○] marked area.

### ALPHABOX FRONT CONNECTOR

| CONNECTOR | CODE      | DEFINITION                         | PACKING |
|-----------|-----------|------------------------------------|---------|
| Screw     | 127974121 | Alphabox Front Connector           | 500 Pcs |
| Dowel     | 127974125 | Alphabox Front Connector Ø10 Dowel | 500 Pcs |



# samet



samet.com.tr

-  SametGroup
-  SametGroup
-  Samet Kalıp ve Madeni Eşya San. ve Tic. A.Ş.
-  sametinternational